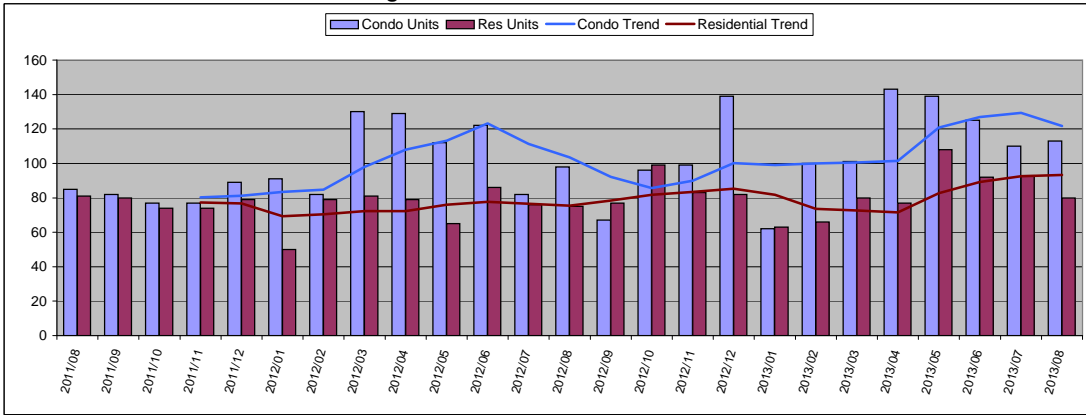


All Maui

August 2013 Number of Units Sold



August 2013

Condo	Units	Year Delta
Units Sold	113	15%
Moving Trend	122	18%

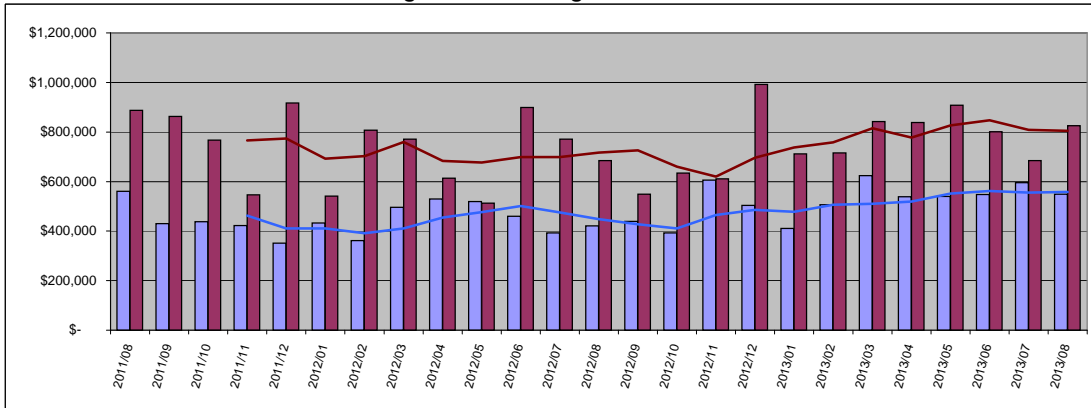
	Units	Inventory
Current Active	603	5.0
Pending	273	2.2

Residential	Units	Year Delta
Units Sold	80	7%
Moving Trend	93	24%

	Units	Inventory *
Current Active	455	4.9
Pending	241	2.6

* Inventory is in months and is based on moving trend

August 2013 Average Sold Price



Condo	Average	Year Delta
Sold Price	\$ 548,587	30%
Moving Trend	\$ 557,865	24%

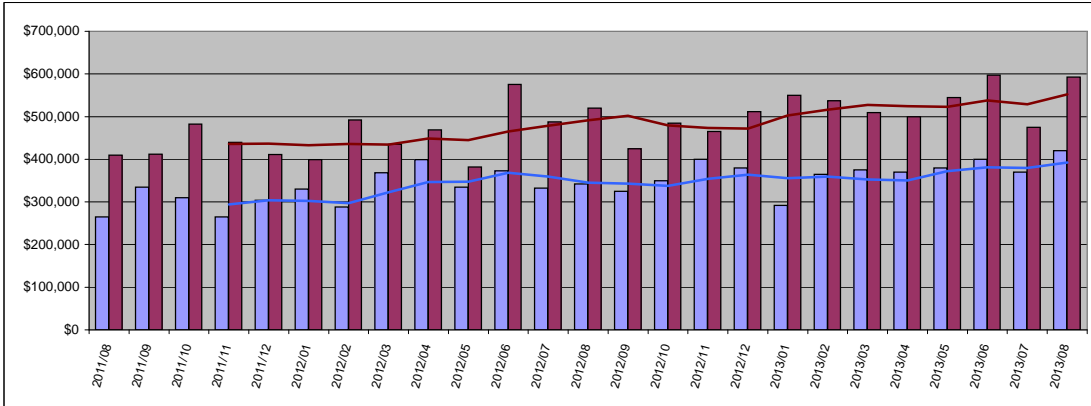
	Average	Ratio
Current Active	\$815,877	146%
Pending	\$457,595	82%

Residential	Average	Year Delta
Sold Price	\$ 825,161	20%
Moving Trend	\$ 804,845	12%

	Average	Ratio **
Current Active	\$2,054,312	255%
Pending	\$720,354	90%

** Ratio is average list price divided by moving trend of average sales price

August 2013 Median Sold Price



Condo	Median	Year Delta
Sold Price	\$ 420,000	23%
Moving Trend	\$ 392,500	14%

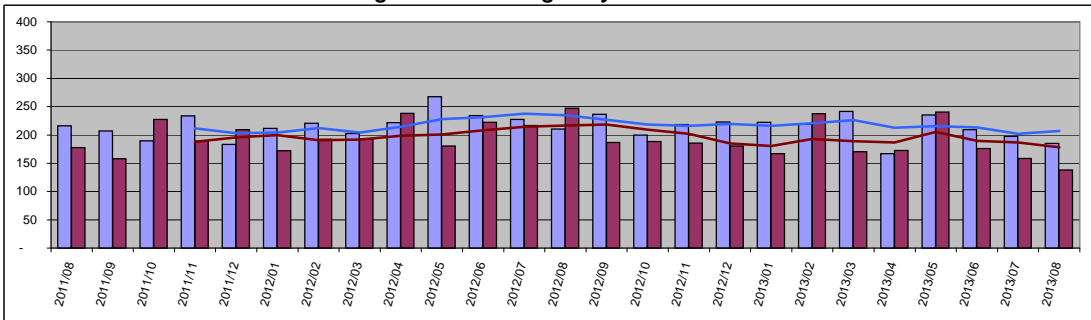
	Median	Ratio
Current Active	\$580,000	148%
Pending	\$331,000	84%

Residential	Median	Year Delta
Sold Price	\$ 592,500	14%
Moving Trend	\$ 552,375	12%

	Median	Ratio **
Current Active	\$1,187,000	215%
Pending	\$500,000	91%

** Ratio is median list price divided by moving trend of a median sales price

August 2013 Average Days On Market



Condo	Value	Year Delta
Days On Mkt	185	-12%
Moving Trend	207	-12%

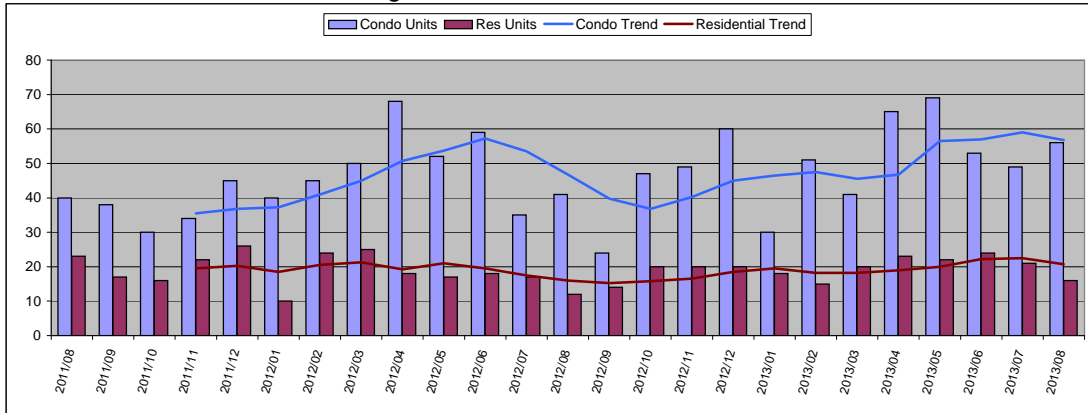
	Value	Year Delta
Current Active	204	
Pending	208	

Residential	Value	Year Delta
Days On Mkt	138	-44%
Moving Trend	178	-18%

	Value	Year Delta
Current Active	183	
Pending	207	

South Maui

August 2013 Number of Units Sold



August 2013

Condo	Units	Year Delta
Units Sold	56	37%
Moving Trend	57	21%

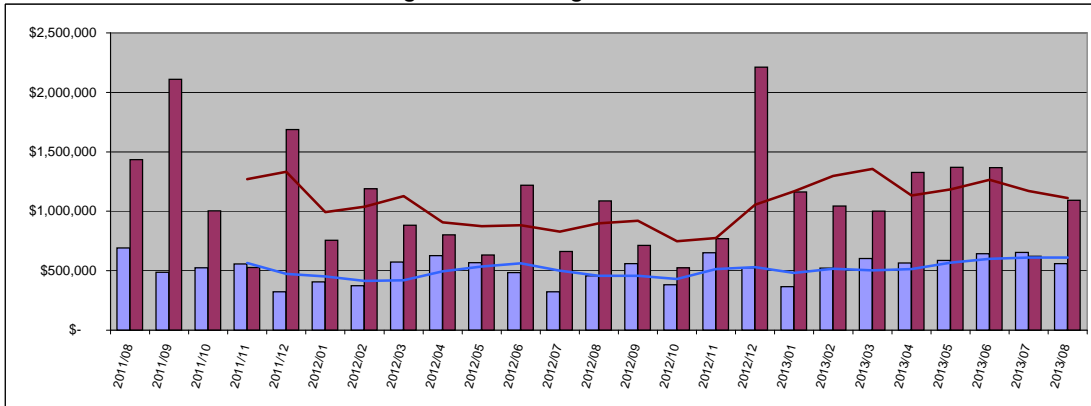
	Units	Inventory
Current Active	243	4.3
Pending	111	2.0

Residential	Units	Year Delta
Units Sold	16	33%
Moving Trend	21	30%

	Units	Inventory *
Current Active	93	4.5
Pending	60	2.9

* Inventory is in months and is based on moving trend

August 2013 Average Sold Price



Condo	Average	Year Delta
Sold Price	\$ 558,439	22%
Moving Trend	\$ 610,302	33%

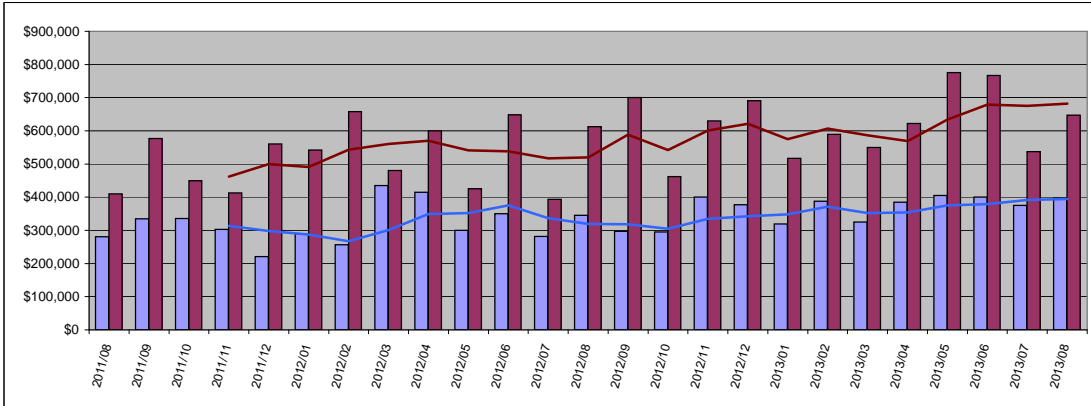
	Average	Ratio
Current Active	\$925,147	152%
Pending	\$444,714	73%

Residential	Average	Year Delta
Sold Price	\$ 1,091,375	0%
Moving Trend	\$ 1,112,656	24%

	Average	Ratio **
Current Active	\$1,959,115	176%
Pending	\$924,240	83%

** Ratio is average list price divided by moving trend of average sales price

August 2013 Median Sold Price



Condo	Median	Year Delta
Sold Price	\$ 397,000	15%
Moving Trend	\$ 394,250	24%

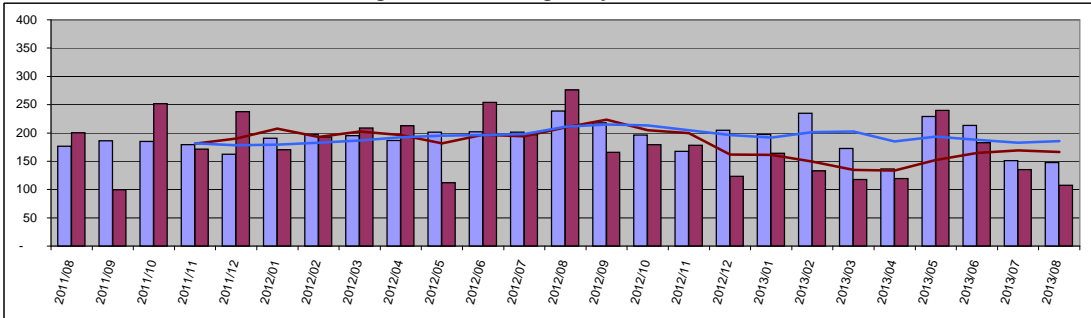
	Median	Ratio
Current Active	\$595,000	151%
Pending	\$339,000	86%

Residential	Median	Year Delta
Sold Price	\$ 647,500	6%
Moving Trend	\$ 681,875	31%

	Median	Ratio **
Current Active	\$1,038,927	152%
Pending	\$657,500	96%

** Ratio is median list price divided by moving trend of a median sales price

August 2013 Average Days On Market

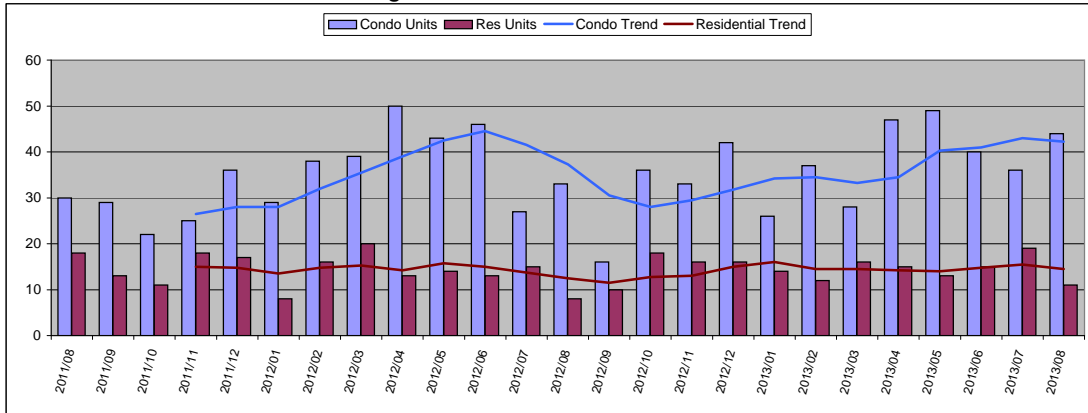


Condo	Value	Year Delta
Days On Mkt	148	-38%
Moving Trend	185	-12%
Current Active	146	
Pending	214	

Residential	Value	Year Delta
Days On Mkt	107	-61%
Moving Trend	166	-21%
Current Active	128	
Pending	193	

Kihei

August 2013 Number of Units Sold



August 2013

Condo	Units	Year Delta
Units Sold	44	33%
Moving Trend	42	13%

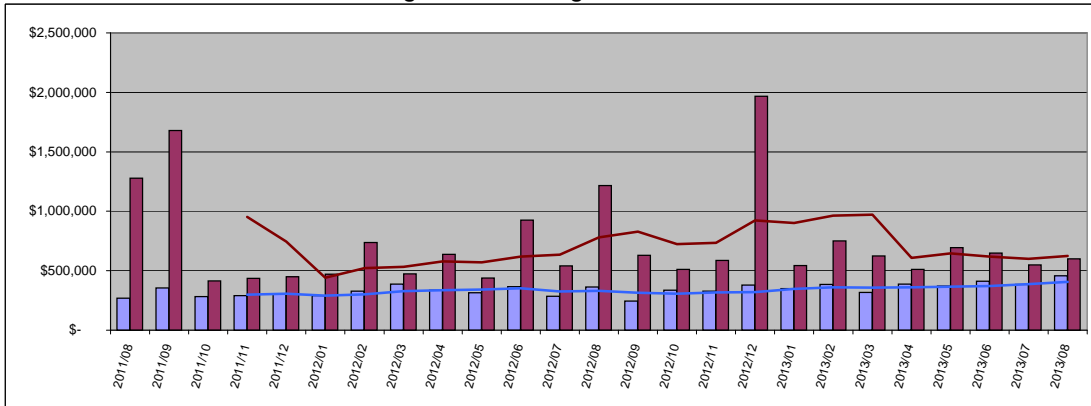
	Units	Inventory
Current Active	149	3.5
Pending	94	2.2

Residential	Units	Year Delta
Units Sold	11	38%
Moving Trend	15	16%

	Units	Inventory *
Current Active	56	3.9
Pending	45	3.1

* Inventory is in months and is based on moving trend

August 2013 Average Sold Price



Condo	Average	Year Delta
Sold Price	\$ 456,645	26%
Moving Trend	\$ 406,134	22%

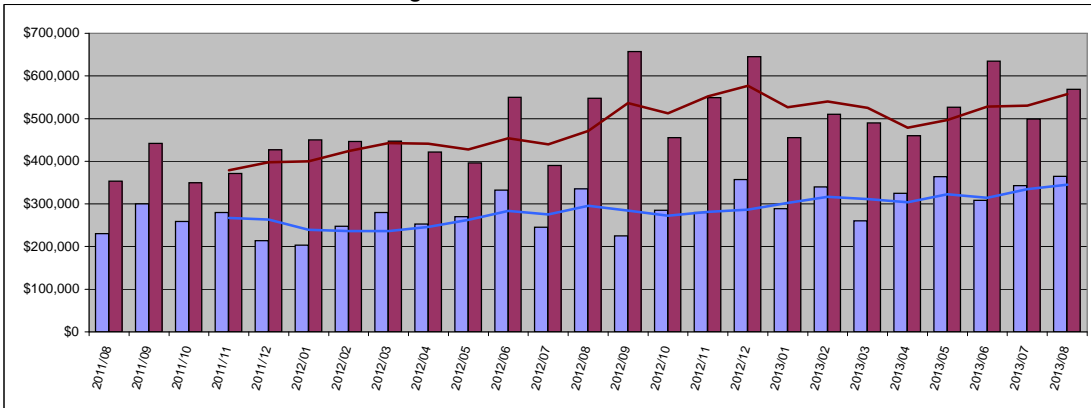
	Average	Ratio
Current Active	\$500,726	123%
Pending	\$334,963	82%

Residential	Average	Year Delta
Sold Price	\$ 600,636	-51%
Moving Trend	\$ 623,602	-20%

	Average	Ratio **
Current Active	\$1,170,639	188%
Pending	\$660,509	106%

** Ratio is average list price divided by moving trend of average sales price

August 2013 Median Sold Price



Condo	Median	Year Delta
Sold Price	\$ 365,000	9%
Moving Trend	\$ 344,906	17%

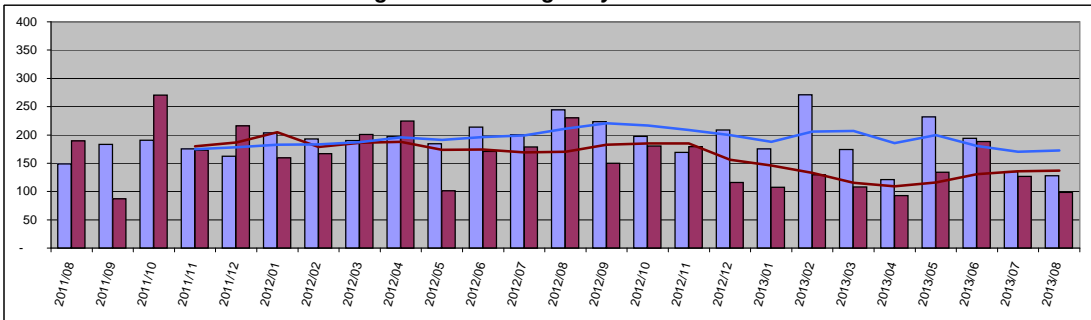
	Median	Ratio
Current Active	\$448,000	130%
Pending	\$317,000	92%

Residential	Median	Year Delta
Sold Price	\$ 569,000	4%
Moving Trend	\$ 557,500	18%

	Median	Ratio **
Current Active	\$787,500	141%
Pending	\$525,000	94%

** Ratio is median list price divided by moving trend of a median sales price

August 2013 Average Days On Market

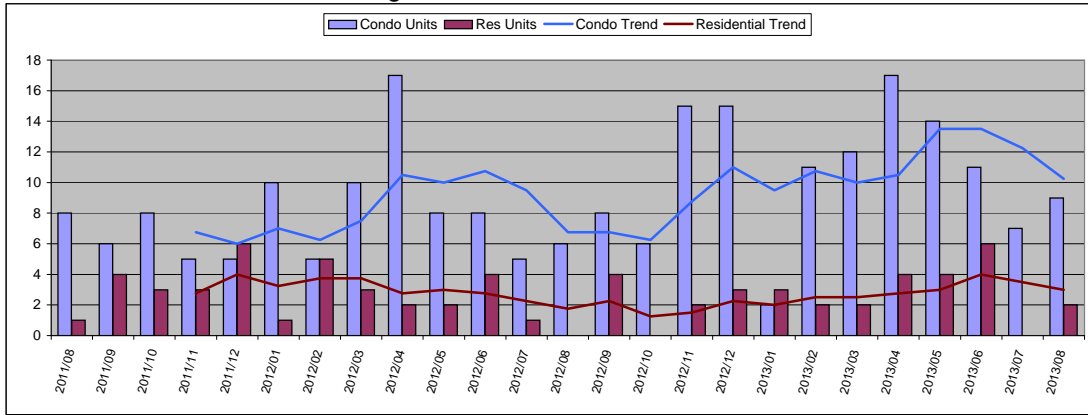


Condo	Value	Year Delta
Days On Mkt	128	-48%
Moving Trend	172	-18%
Current Active	120	
Pending	209	

Residential	Value	Year Delta
Days On Mkt	98	-57%
Moving Trend	137	-20%
Current Active	128	
Pending	188	

Wailea

August 2013 Number of Units Sold



August 2013

Condo	Units	Year Delta
Units Sold	9	50%
Moving Trend	10	52%

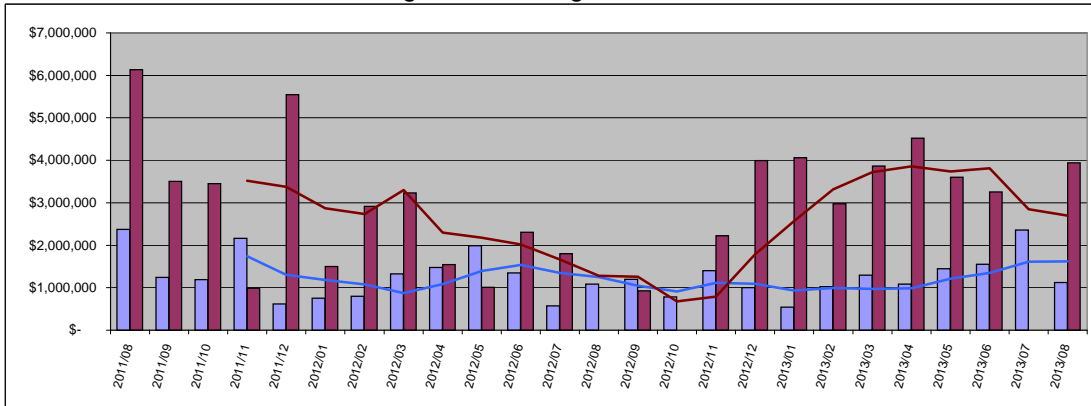
	Units	Inventory
Current Active	83	8.1
Pending	11	1.1

Residential	Units	Year Delta
Units Sold	2	-
Moving Trend	3	71%

	Units	Inventory *
Current Active	26	8.7
Pending	8	2.7

* Inventory is in months and is based on moving trend

August 2013 Average Sold Price



Condo	Average	Year Delta
Sold Price	\$ 1,122,806	4%
Moving Trend	\$ 1,621,071	30%

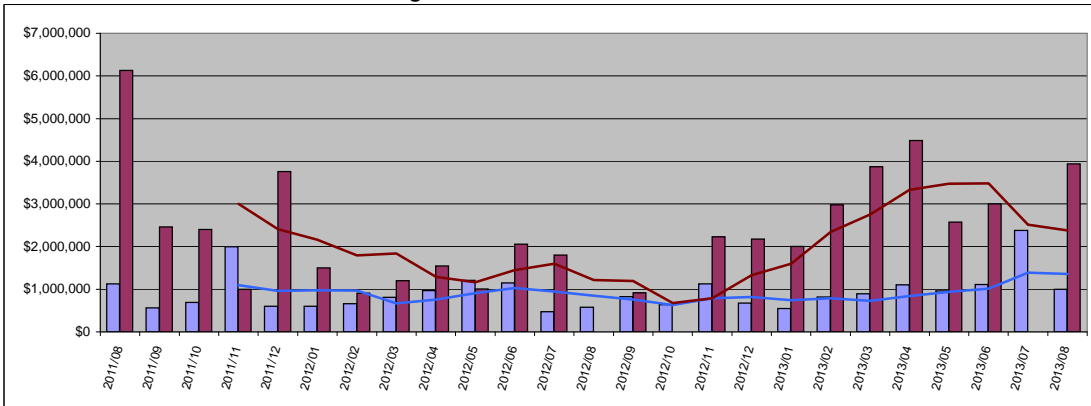
	Average	Ratio
Current Active	\$1,753,708	108%
Pending	\$1,487,536	92%

Residential	Average	Year Delta
Sold Price	\$ 3,940,000	-
Moving Trend	\$ 2,700,208	111%

	Average	Ratio **
Current Active	\$3,918,304	145%
Pending	\$1,899,750	70%

** Ratio is average list price divided by moving trend of average sales price

August 2013 Median Sold Price



Condo	Median	Year Delta
Sold Price	\$ 998,750	74%
Moving Trend	\$ 1,360,938	60%

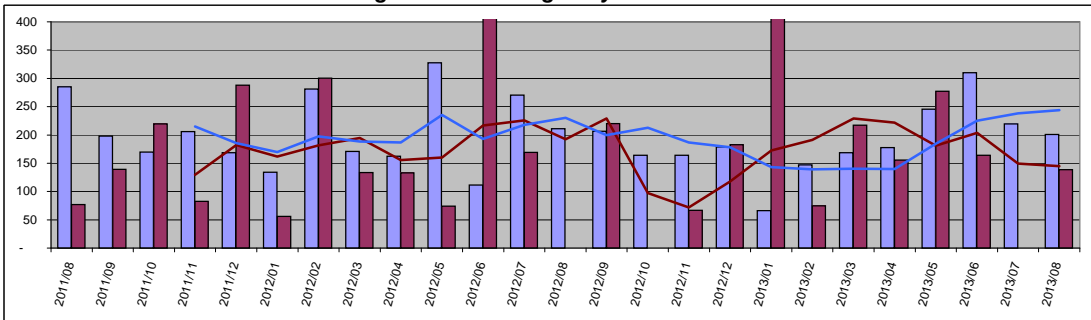
	Median	Ratio
Current Active	\$1,379,000	101%
Pending	\$1,325,000	97%

Residential	Median	Year Delta
Sold Price	\$ 3,940,000	-
Moving Trend	\$ 2,378,750	96%

	Median	Ratio **
Current Active	\$2,422,500	102%
Pending	\$1,585,000	67%

** Ratio is median list price divided by moving trend of a median sales price

August 2013 Average Days On Market

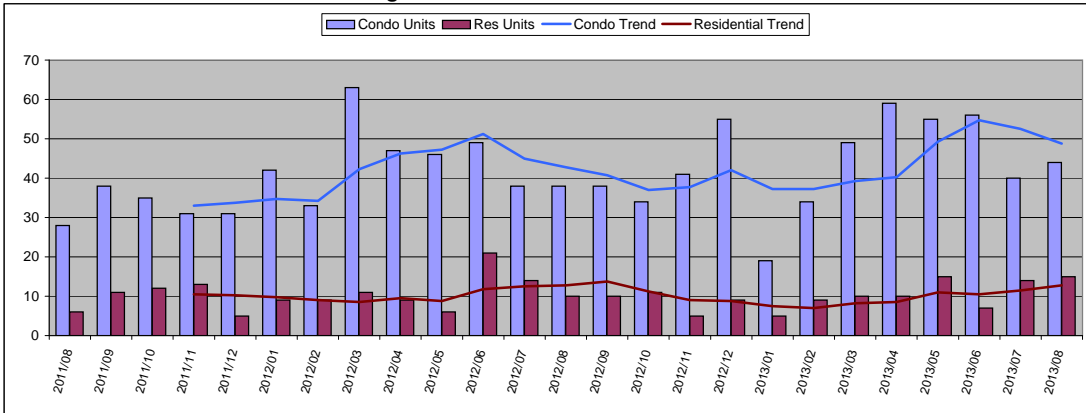


Condo	Value	Year Delta
Days On Mkt	201	-5%
Moving Trend	244	6%
Current Active	202	
Pending	197	

Residential	Value	Year Delta
Days On Mkt	139	-
Moving Trend	145	-25%
Current Active	129	
Pending	144	

West Maui

August 2013 Number of Units Sold



August 2013

Condo	Units	Year Delta
Units Sold	44	16%
Moving Trend	49	14%

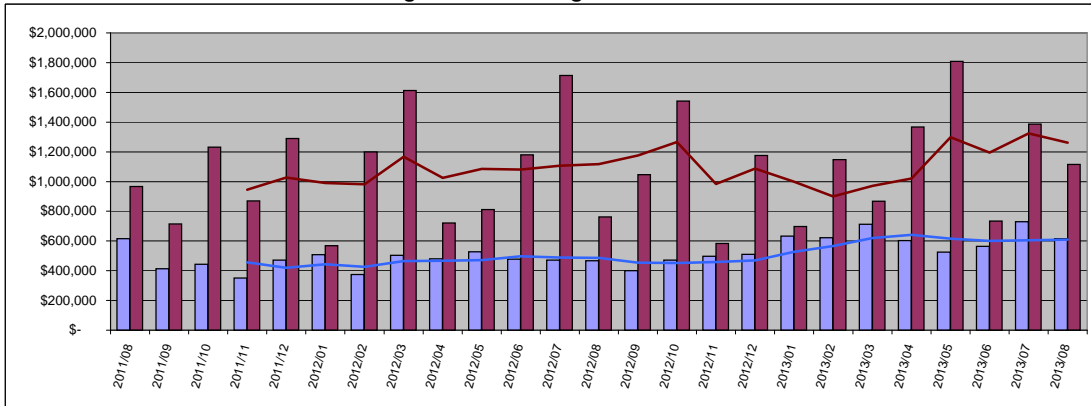
	Units	Inventory
Current Active	310	6.4
Pending	78	1.6

Residential	Units	Year Delta
Units Sold	15	50%
Moving Trend	13	0%

	Units	Inventory *
Current Active	111	8.7
Pending	37	2.9

* Inventory is in months and is based on moving trend

August 2013 Average Sold Price



Condo	Average	Year Delta
Sold Price	\$ 616,451	32%
Moving Trend	\$ 608,323	25%

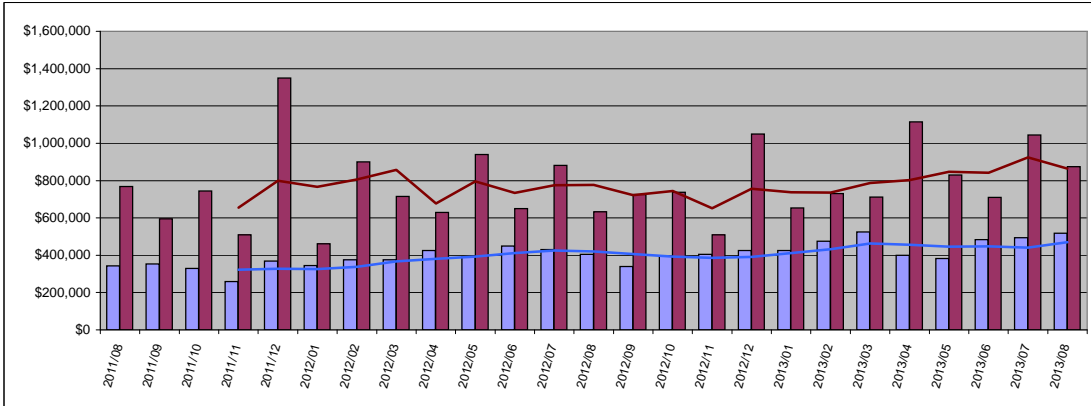
	Average	Ratio
Current Active	\$820,645	135%
Pending	\$597,834	98%

Residential	Average	Year Delta
Sold Price	\$ 1,114,450	46%
Moving Trend	\$ 1,260,803	13%

	Average	Ratio **
Current Active	\$3,514,504	279%
Pending	\$1,050,603	83%

** Ratio is average list price divided by moving trend of average sales price

August 2013 Median Sold Price



Condo	Median	Year Delta
Sold Price	\$ 518,750	28%
Moving Trend	\$ 470,000	12%

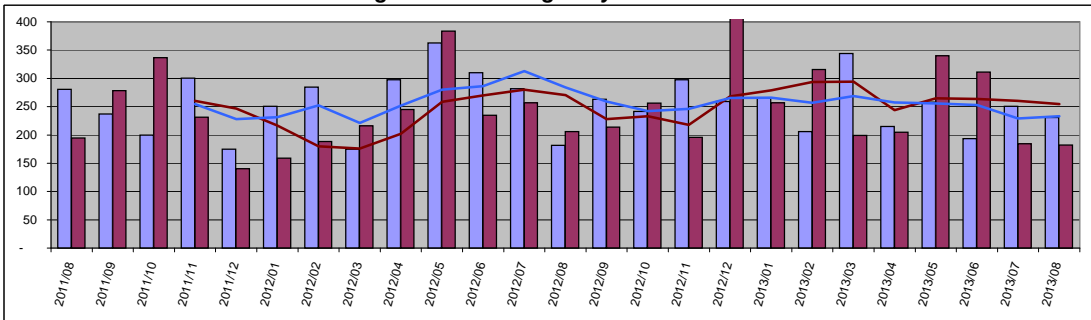
	Median	Ratio
Current Active	\$670,000	143%
Pending	\$409,500	87%

Residential	Median	Year Delta
Sold Price	\$ 875,000	38%
Moving Trend	\$ 865,000	11%

	Median	Ratio **
Current Active	\$2,595,000	300%
Pending	\$795,000	92%

** Ratio is median list price divided by moving trend of a median sales price

August 2013 Average Days On Market



Condo	Value	Year Delta
Days On Mkt	231	27%
Moving Trend	233	-18%

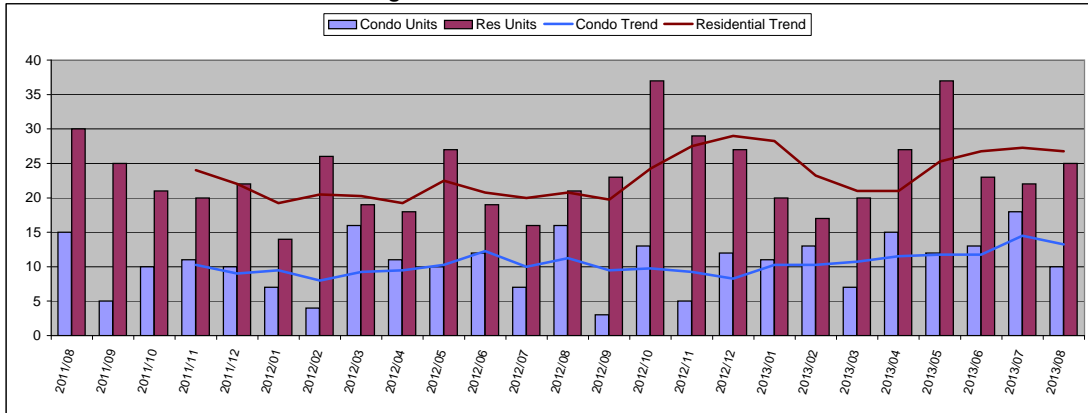
	Value	Year Delta
Current Active	249	
Pending	258	

Residential	Value	Year Delta
Days On Mkt	182	-11%
Moving Trend	255	-6%

	Value	Year Delta
Current Active	250	
Pending	321	

Central Maui

August 2013 Number of Units Sold



August 2013

Condo	Units	Year Delta
Units Sold	10	-38%
Moving Trend	13	18%

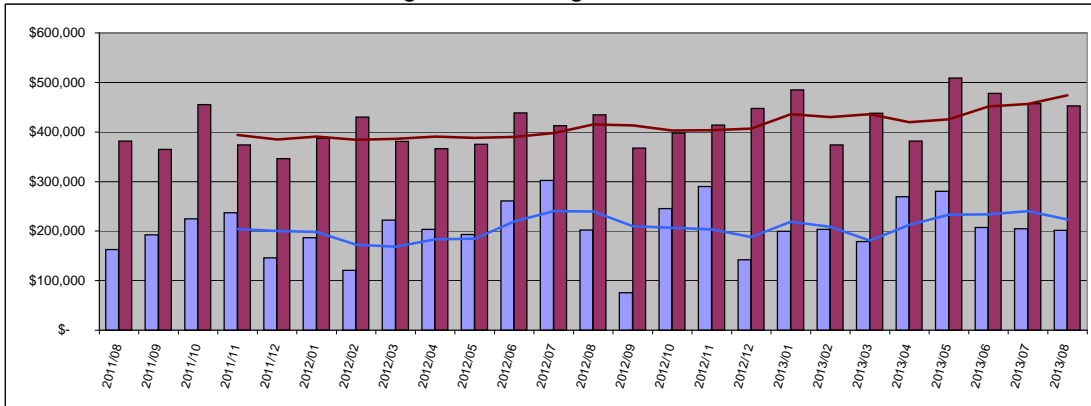
	Units	Inventory
Current Active	19	1.4
Pending	74	5.6

Residential	Units	Year Delta
Units Sold	25	19%
Moving Trend	27	29%

	Units	Inventory *
Current Active	70	2.6
Pending	70	2.6

* Inventory is in months and is based on moving trend

August 2013 Average Sold Price



Condo	Average	Year Delta
Sold Price	\$ 201,241	-1%
Moving Trend	\$ 223,502	-7%

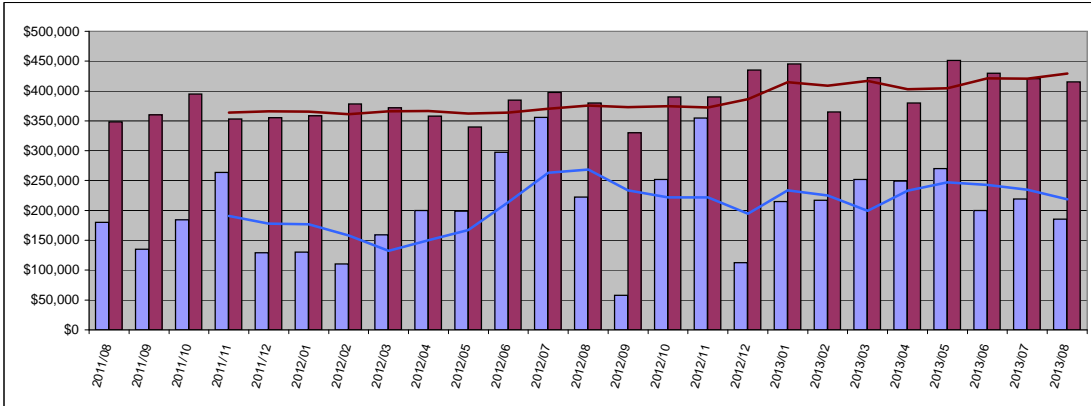
	Average	Ratio
Current Active	\$232,347	104%
Pending	\$311,477	139%

Residential	Average	Year Delta
Sold Price	\$ 452,508	4%
Moving Trend	\$ 474,094	14%

	Average	Ratio **
Current Active	\$700,381	148%
Pending	\$462,017	97%

** Ratio is average list price divided by moving trend of average sales price

August 2013 Median Sold Price



Condo	Median	Year Delta
Sold Price	\$ 185,580	-17%
Moving Trend	\$ 218,645	-19%

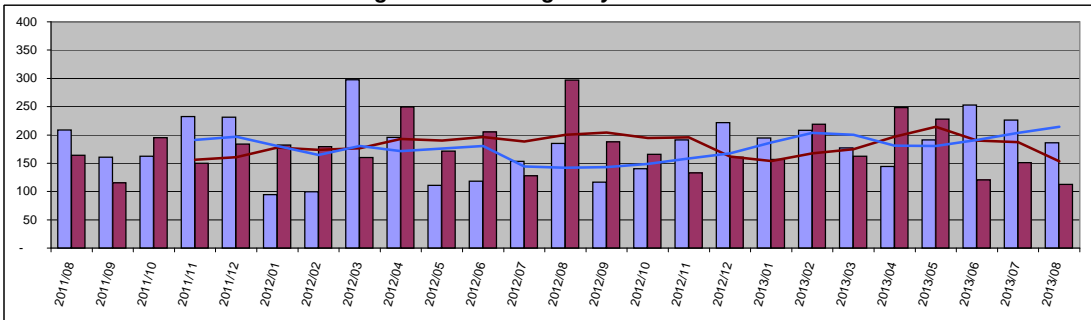
	Median	Ratio
Current Active	\$179,900	82%
Pending	\$277,500	127%

Residential	Median	Year Delta
Sold Price	\$ 415,260	9%
Moving Trend	\$ 429,345	14%

	Median	Ratio **
Current Active	\$582,000	136%
Pending	\$400,000	93%

** Ratio is median list price divided by moving trend of a median sales price

August 2013 Average Days On Market

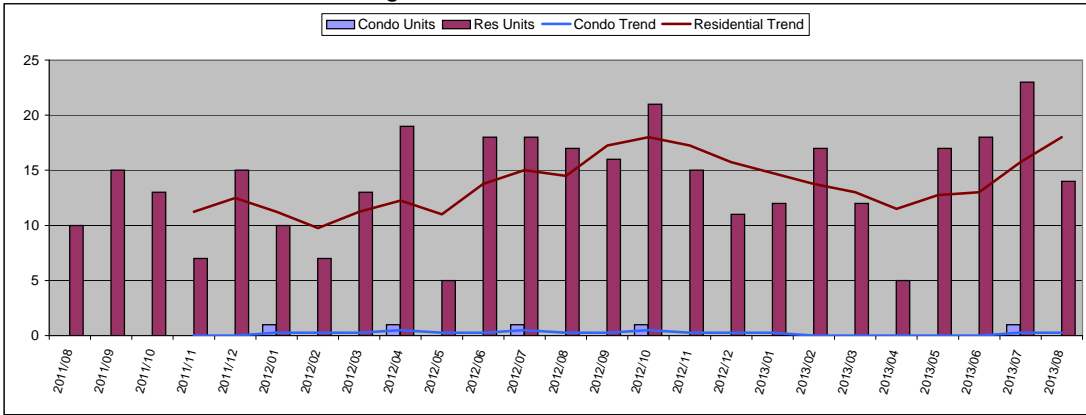


Condo	Value	Year Delta
Days On Mkt	186	1%
Moving Trend	214	51%
Current Active	175	
Pending	140	

Residential	Value	Year Delta
Days On Mkt	113	-62%
Moving Trend	153	-24%
Current Active	111	
Pending	185	

Upcountry

August 2013 Number of Units Sold



August 2013

Condo	Units	Year Delta
Units Sold	0	-
Moving Trend	0	0%

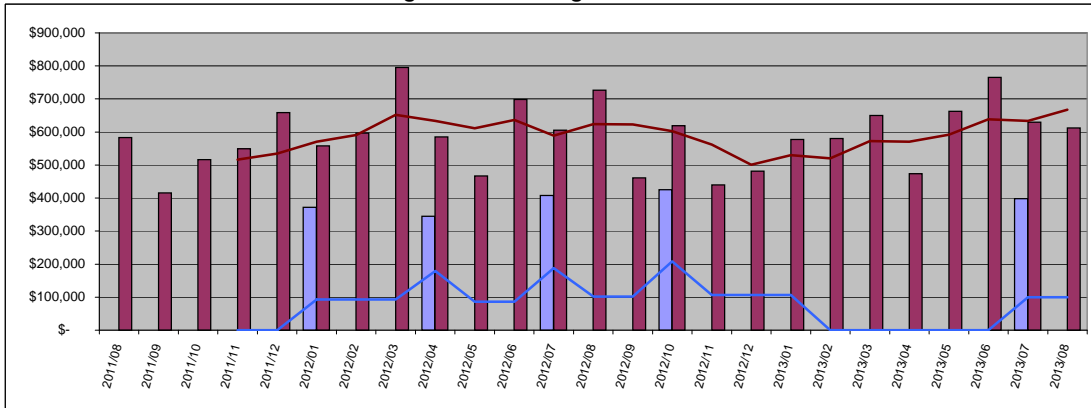
	Units	Inventory
Current Active	0	
Pending	2	8.0

Residential	Units	Year Delta
Units Sold	14	-18%
Moving Trend	18	24%

	Units	Inventory *
Current Active	87	4.8
Pending	38	2.1

* Inventory is in months and is based on moving trend

August 2013 Average Sold Price



Condo	Average	Year Delta
Sold Price \$	-	-
Moving Trend \$	99,500	-2%

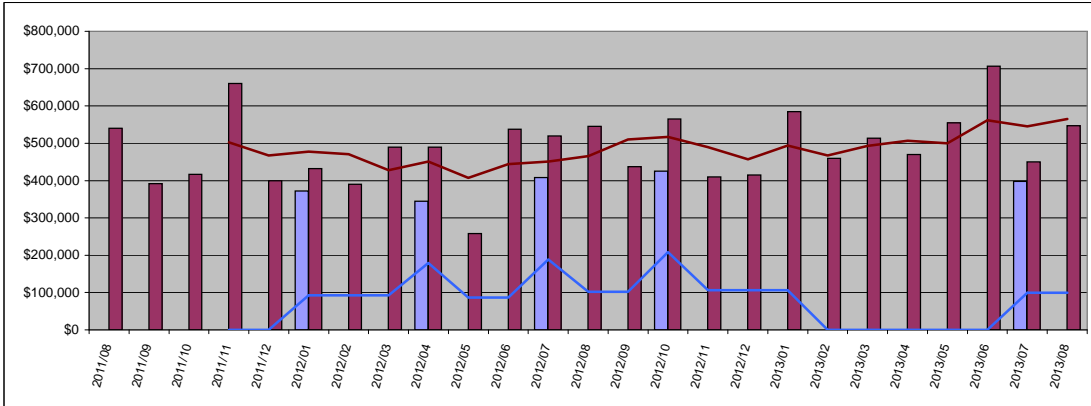
	Average	Ratio
Current Active	\$0	
Pending	\$472,500	475%

Residential	Average	Year Delta
Sold Price \$	612,143	-16%
Moving Trend \$	667,643	7%

	Average	Ratio **
Current Active	\$1,537,055	230%
Pending	\$599,382	90%

** Ratio is average list price divided by moving trend of average sales price

August 2013 Median Sold Price



Condo	Median	Year Delta
Sold Price \$	-	-
Moving Trend \$	99,500	-2%

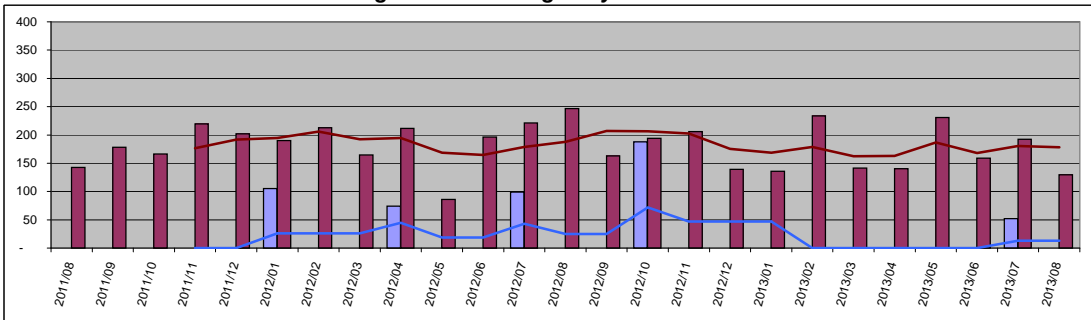
	Median	Ratio
Current Active	\$0	
Pending	\$472,500	475%

Residential	Median	Year Delta
Sold Price \$	547,000	0%
Moving Trend \$	564,688	21%

	Median	Ratio **
Current Active	\$1,150,000	204%
Pending	\$464,450	82%

** Ratio is median list price divided by moving trend of a median sales price

August 2013 Average Days On Market

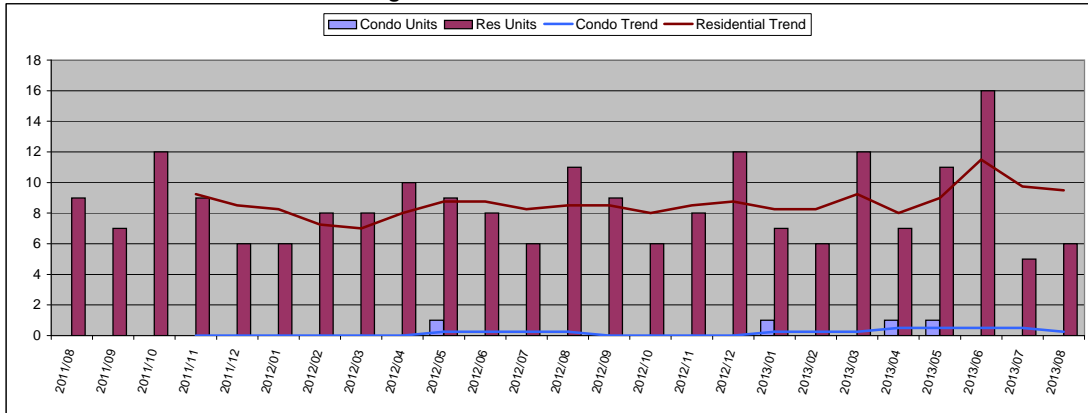


Condo	Value	Year Delta
Days On Mkt	0	-
Moving Trend	13	-47%
Current Active	0	
Pending	61	

Residential	Value	Year Delta
Days On Mkt	130	-47%
Moving Trend	178	-5%
Current Active	141	
Pending	174	

North Shore Maui

August 2013 Number of Units Sold



August 2013

Condo	Units	Year Delta
Units Sold	0	-
Moving Trend	0	0%

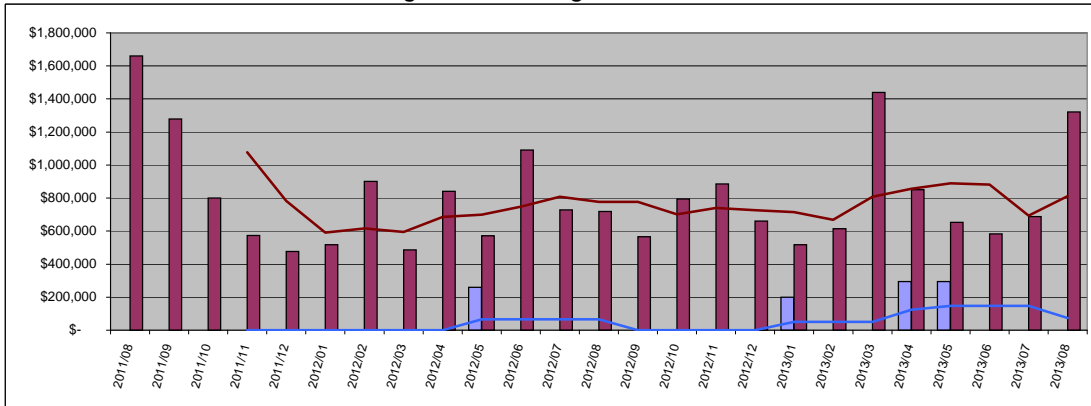
	Units	Inventory
Current Active	2	8.0
Pending	1	4.0

Residential	Units	Year Delta
Units Sold	6	-45%
Moving Trend	10	12%

	Units	Inventory *
Current Active	56	5.9
Pending	26	2.7

* Inventory is in months and is based on moving trend

August 2013 Average Sold Price



Condo	Average	Year Delta
Sold Price \$	-	-
Moving Trend \$	73,750	13%

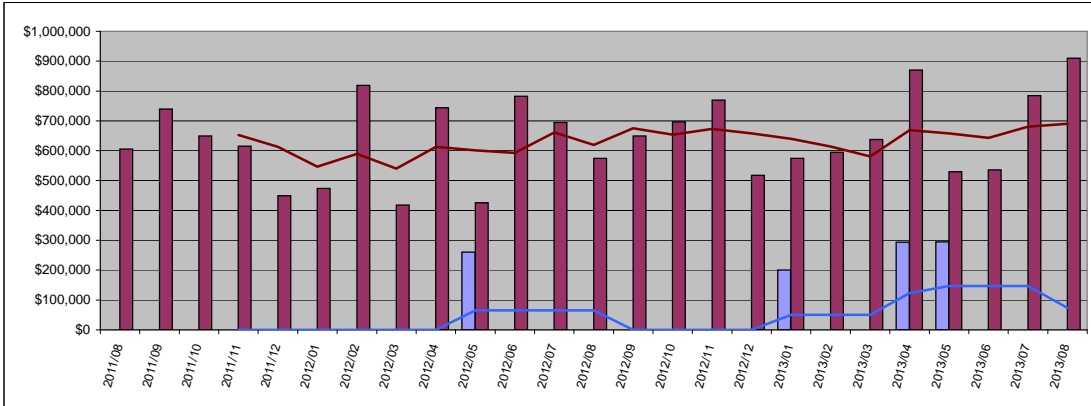
	Average	Ratio
Current Active	\$299,950	407%
Pending	\$199,000	270%

Residential	Average	Year Delta
Sold Price \$	1,321,583	84%
Moving Trend \$	811,417	4%

	Average	Ratio **
Current Active	\$2,272,170	280%
Pending	\$688,115	85%

** Ratio is average list price divided by moving trend of average sales price

August 2013 Median Sold Price



Condo	Median	Year Delta
Sold Price \$	-	-
Moving Trend \$	73,750	13%

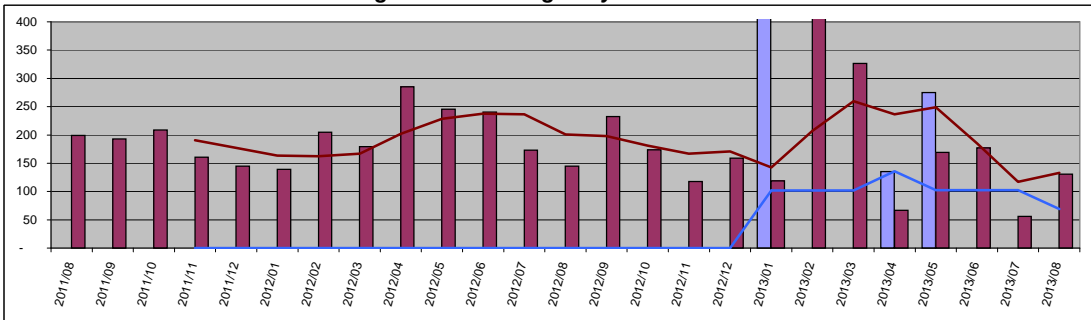
	Median	Ratio
Current Active	\$299,950	407%
Pending	\$199,000	270%

Residential	Median	Year Delta
Sold Price \$	910,250	58%
Moving Trend \$	690,313	11%

	Median	Ratio **
Current Active	\$1,492,500	216%
Pending	\$648,500	94%

** Ratio is median list price divided by moving trend of a median sales price

August 2013 Average Days On Market

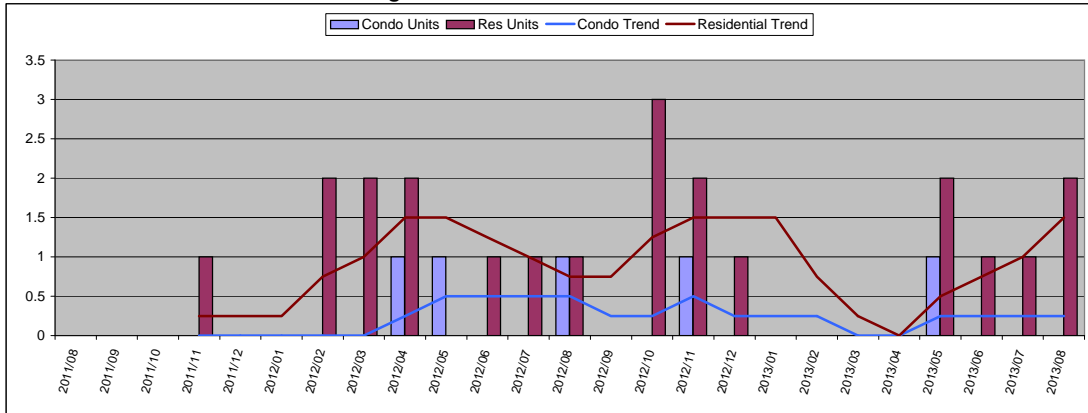


Condo	Value	Year Delta
Days On Mkt	0	-
Moving Trend	69	-
Current Active	85	
Pending	587	

Residential	Value	Year Delta
Days On Mkt	131	-10%
Moving Trend	133	-34%
Current Active	238	
Pending	175	

East Maui

August 2013 Number of Units Sold



August 2013

Condo	Units	Year Delta
Units Sold	0	-
Moving Trend	0	-50%

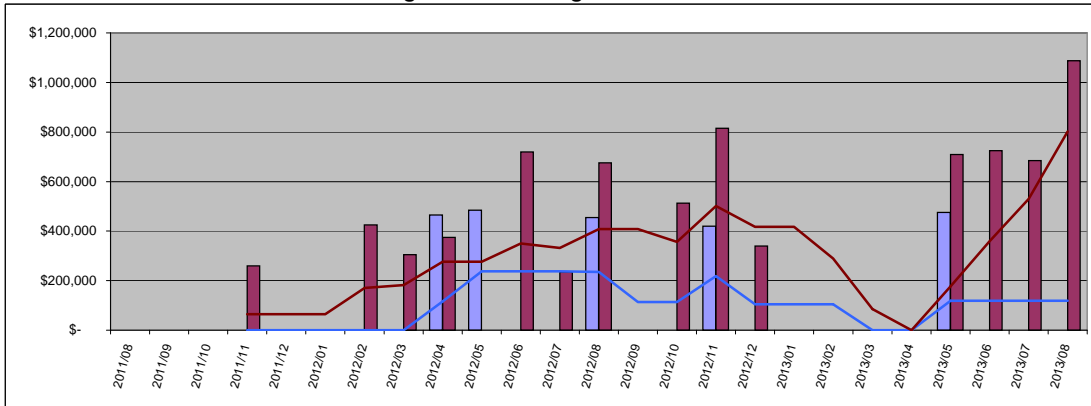
	Units	Inventory
Current Active	1	4.0
Pending	0	

Residential	Units	Year Delta
Units Sold	2	100%
Moving Trend	2	100%

	Units	Inventory *
Current Active	16	10.7
Pending	2	1.3

* Inventory is in months and is based on moving trend

August 2013 Average Sold Price



Condo	Average	Year Delta
Sold Price \$	-	-
Moving Trend \$	118,750	-49%

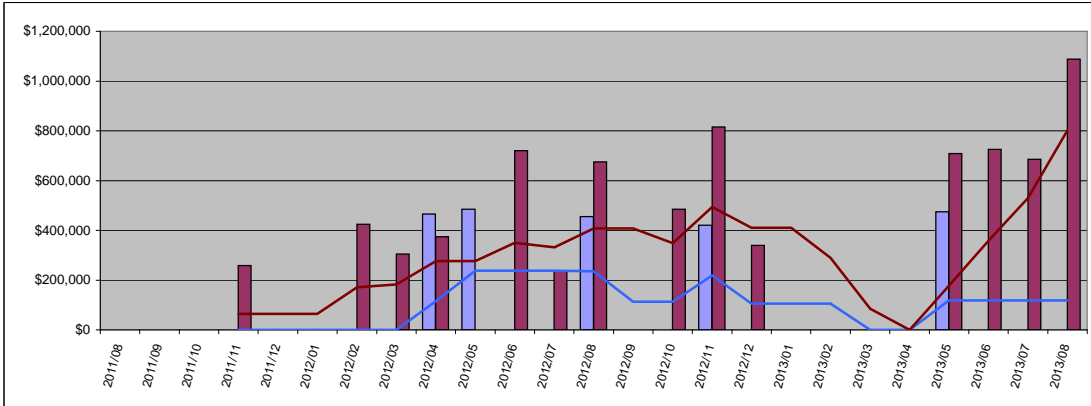
	Average	Ratio
Current Active	\$475,000	400%
Pending	\$0	

Residential	Average	Year Delta
Sold Price \$	1,087,500	61%
Moving Trend \$	801,625	97%

	Average	Ratio **
Current Active	\$1,482,750	185%
Pending	\$537,500	67%

** Ratio is average list price divided by moving trend of average sales price

August 2013 Median Sold Price



Condo	Median	Year Delta
Sold Price \$	-	-
Moving Trend \$	118,750	-49%

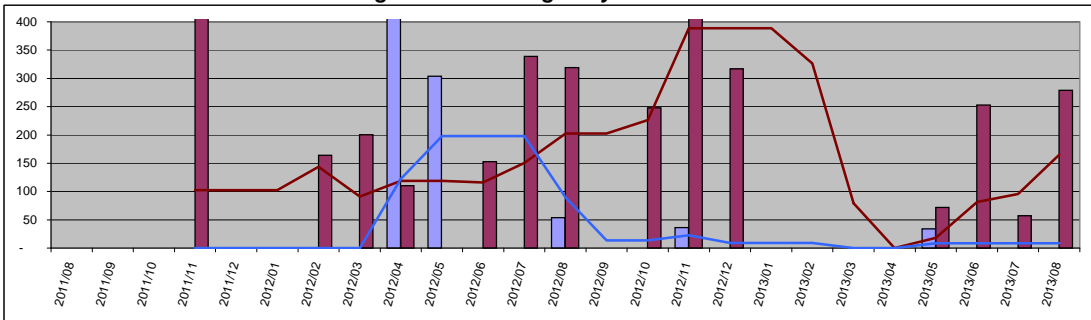
	Median	Ratio
Current Active	\$475,000	400%
Pending	\$0	

Residential	Median	Year Delta
Sold Price \$	1,087,500	61%
Moving Trend \$	801,625	97%

	Median	Ratio **
Current Active	\$1,090,000	136%
Pending	\$537,500	67%

** Ratio is median list price divided by moving trend of a median sales price

August 2013 Average Days On Market



Condo	Value	Year Delta
Days On Mkt	0	-
Moving Trend	9	-91%
Current Active	136	
Pending	0	

Residential	Value	Year Delta
Days On Mkt	279	-13%
Moving Trend	165	-18%
Current Active	282	
Pending	126	