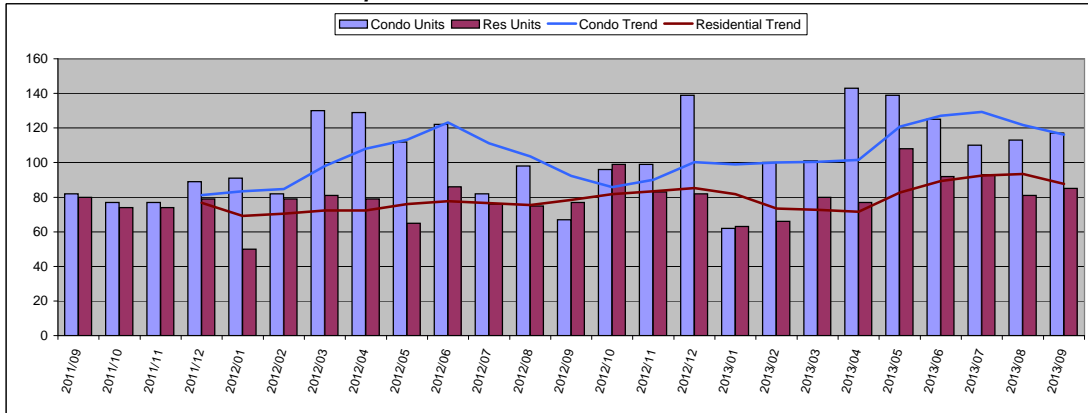


All Maui

September 2013 Number of Units Sold



September 2013

Condo	Units	Year Delta
Units Sold	117	75%
Moving Trend	116	26%

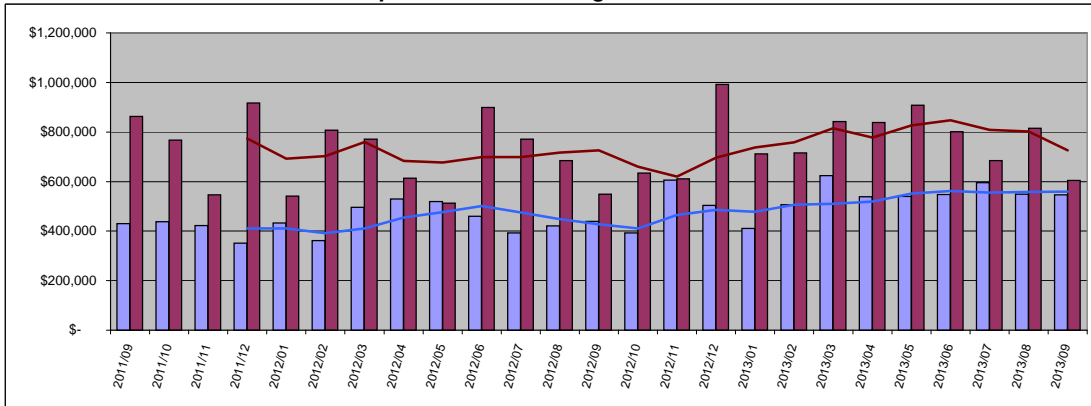
	Units	Inventory
Current Active	591	5.1
Pending	239	2.1

Residential	Units	Year Delta
Units Sold	85	10%
Moving Trend	88	12%

	Units	Inventory *
Current Active	453	5.2
Pending	233	2.7

* Inventory is in months and is based on moving trend

September 2013 Average Sold Price



Condo	Average	Year Delta
Sold Price	\$ 546,343	24%
Moving Trend	\$ 559,546	31%

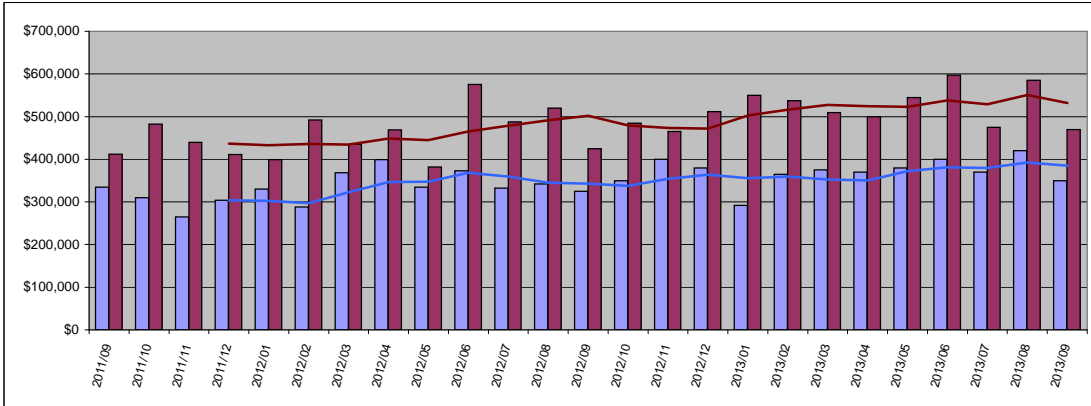
	Average	Ratio
Current Active	\$829,174	148%
Pending	\$459,838	82%

Residential	Average	Year Delta
Sold Price	\$ 604,631	10%
Moving Trend	\$ 726,342	0%

	Average	Ratio **
Current Active	\$2,039,748	281%
Pending	\$756,491	104%

** Ratio is average list price divided by moving trend of average sales price

September 2013 Median Sold Price



Condo	Median	Year Delta
Sold Price	\$ 350,000	8%
Moving Trend	\$ 385,000	12%

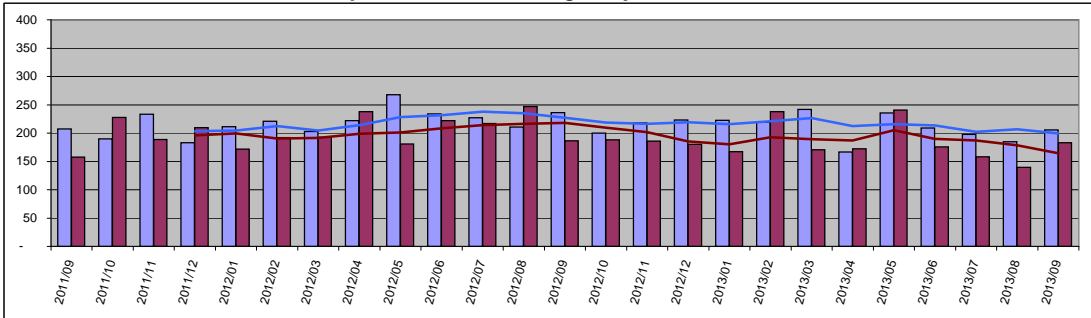
	Median	Ratio
Current Active	\$575,000	149%
Pending	\$317,500	82%

Residential	Median	Year Delta
Sold Price	\$ 470,000	11%
Moving Trend	\$ 531,875	6%

	Median	Ratio **
Current Active	\$1,140,000	214%
Pending	\$500,000	94%

** Ratio is median list price divided by moving trend of a median sales price

September 2013 Average Days On Market

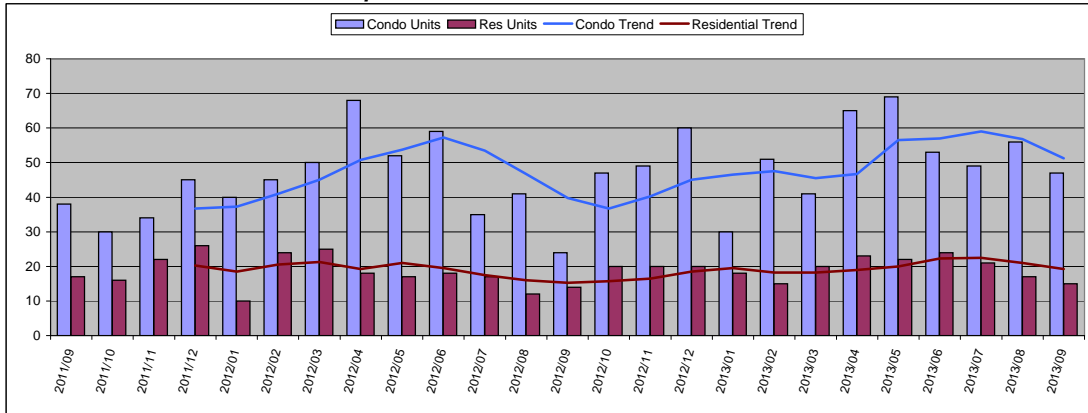


Condo	Value	Year Delta
Days On Mkt	205	-13%
Moving Trend	199	-12%
Current Active	199	
Pending	193	

Residential	Value	Year Delta
Days On Mkt	183	-2%
Moving Trend	164	-25%
Current Active	170	
Pending	198	

South Maui

September 2013 Number of Units Sold



September 2013

Condo	Units	Year Delta
Units Sold	47	96%
Moving Trend	51	29%

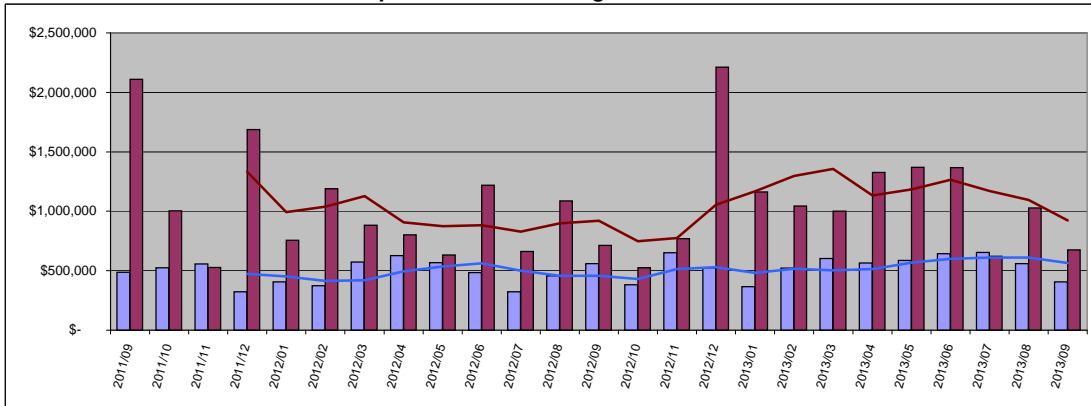
	Units	Inventory
Current Active	259	5.1
Pending	90	1.8

Residential	Units	Year Delta
Units Sold	15	7%
Moving Trend	19	26%

	Units	Inventory *
Current Active	103	5.4
Pending	53	2.8

* Inventory is in months and is based on moving trend

September 2013 Average Sold Price



Condo	Average	Year Delta
Sold Price	\$ 407,094	-27%
Moving Trend	\$ 565,270	24%

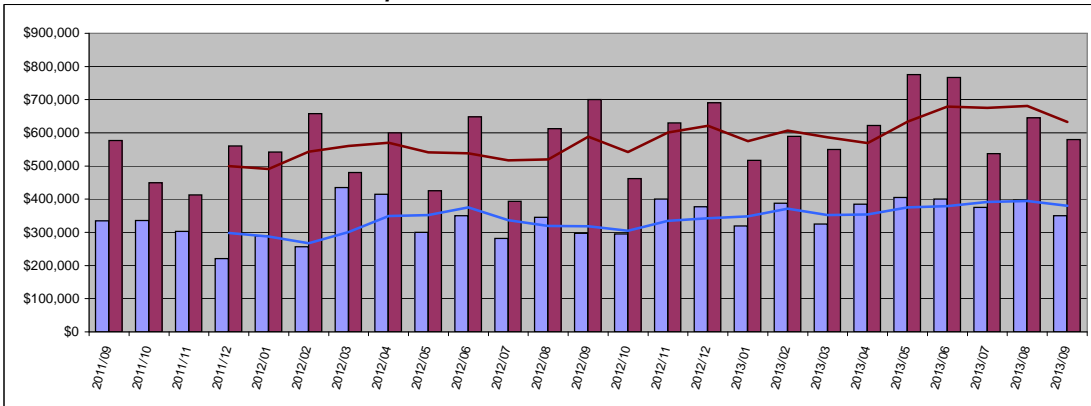
	Average	Ratio
Current Active	\$915,816	162%
Pending	\$467,887	83%

Residential	Average	Year Delta
Sold Price	\$ 675,000	-5%
Moving Trend	\$ 923,025	0%

	Average	Ratio **
Current Active	\$2,087,242	226%
Pending	\$1,108,375	120%

** Ratio is average list price divided by moving trend of average sales price

September 2013 Median Sold Price



Condo	Median	Year Delta
Sold Price	\$ 350,000	18%
Moving Trend	\$ 380,500	19%

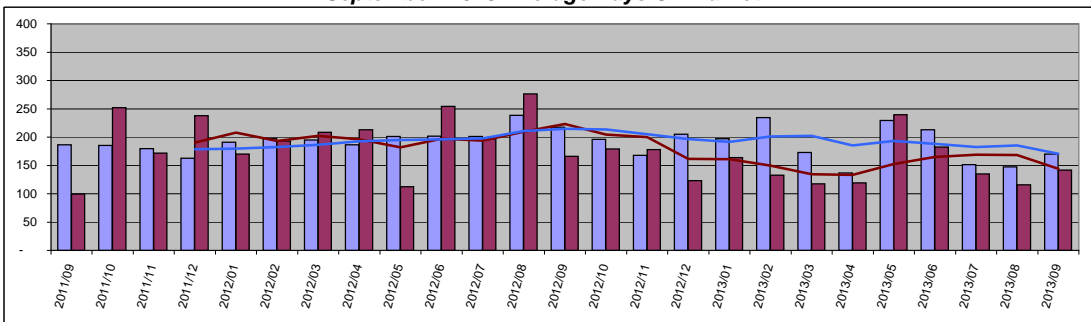
	Median	Ratio
Current Active	\$550,000	145%
Pending	\$321,250	84%

Residential	Median	Year Delta
Sold Price	\$ 580,000	-17%
Moving Trend	\$ 632,375	7%

	Median	Ratio **
Current Active	\$999,500	158%
Pending	\$719,900	114%

** Ratio is median list price divided by moving trend of a median sales price

September 2013 Average Days On Market

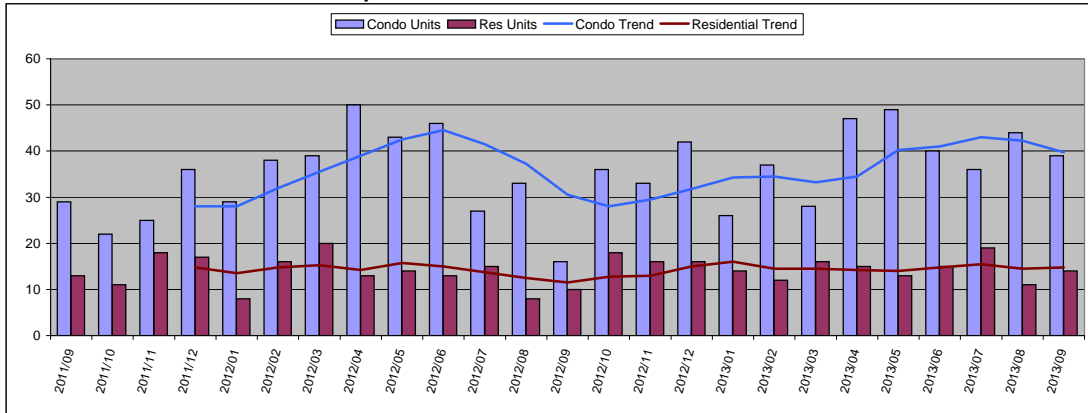


Condo	Value	Year Delta
Days On Mkt	170	-22%
Moving Trend	171	-21%
Current Active	139	
Pending	199	

Residential	Value	Year Delta
Days On Mkt	142	-15%
Moving Trend	144	-36%
Current Active	124	
Pending	218	

Kihei

September 2013 Number of Units Sold



September 2013

Condo	Units	Year Delta
Units Sold	39	144%
Moving Trend	40	30%

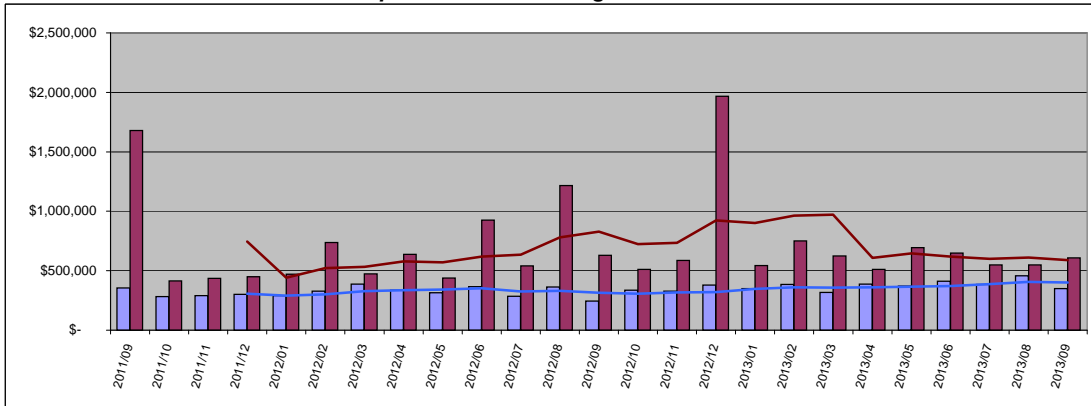
	Units	Inventory
Current Active	162	4.1
Pending	76	1.9

Residential	Units	Year Delta
Units Sold	14	40%
Moving Trend	15	28%

	Units	Inventory *
Current Active	62	4.2
Pending	42	2.8

* Inventory is in months and is based on moving trend

September 2013 Average Sold Price



Condo	Average	Year Delta
Sold Price	\$ 348,549	43%
Moving Trend	\$ 400,613	27%

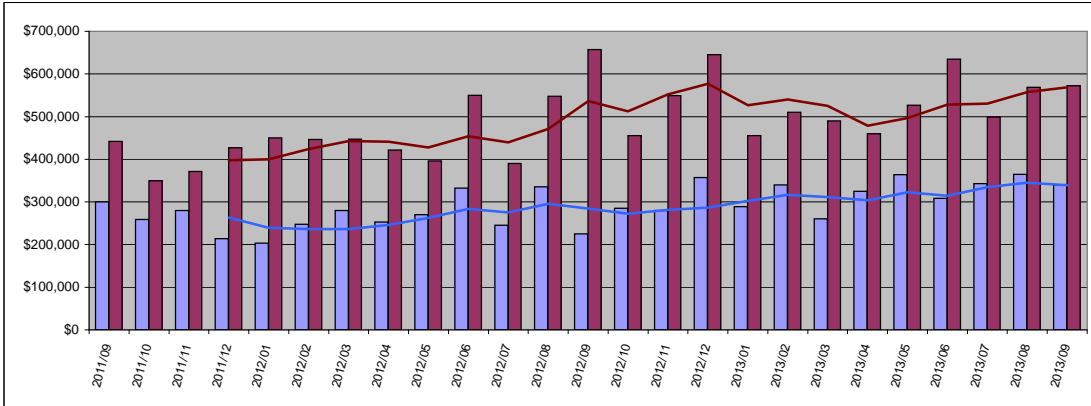
	Average	Ratio
Current Active	\$479,264	120%
Pending	\$324,130	81%

Residential	Average	Year Delta
Sold Price	\$ 608,214	-3%
Moving Trend	\$ 588,905	-29%

	Average	Ratio **
Current Active	\$1,409,919	239%
Pending	\$831,438	141%

** Ratio is average list price divided by moving trend of average sales price

September 2013 Median Sold Price



Condo	Median	Year Delta
Sold Price	\$ 340,000	51%
Moving Trend	\$ 338,906	19%

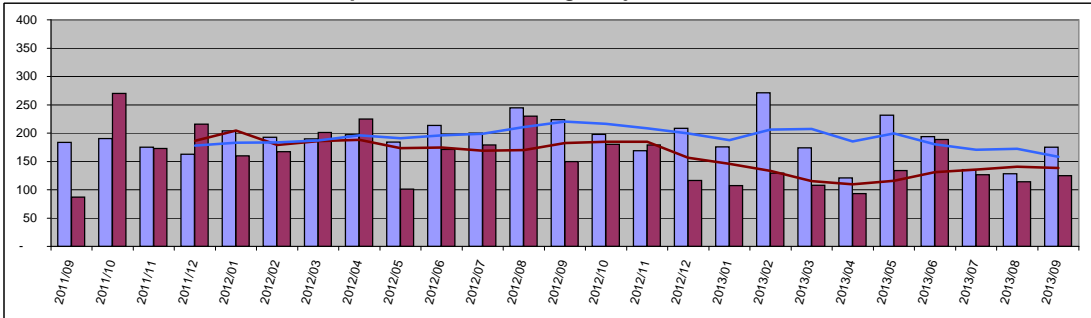
	Median	Ratio
Current Active	\$435,000	128%
Pending	\$284,500	84%

Residential	Median	Year Delta
Sold Price	\$ 572,500	-13%
Moving Trend	\$ 568,875	6%

	Median	Ratio **
Current Active	\$787,000	138%
Pending	\$549,000	97%

** Ratio is median list price divided by moving trend of a median sales price

September 2013 Average Days On Market

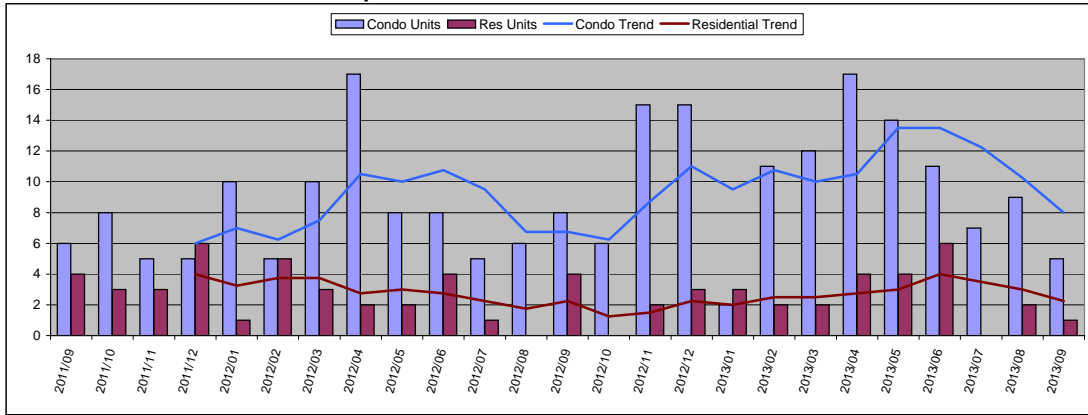


Condo	Value	Year Delta
Days On Mkt	175	-22%
Moving Trend	158	-28%
Current Active	115	
Pending	198	

Residential	Value	Year Delta
Days On Mkt	125	-16%
Moving Trend	139	-24%
Current Active	112	
Pending	211	

Wailea

September 2013 Number of Units Sold



September 2013

Condo	Units	Year Delta
Units Sold	5	-38%
Moving Trend	8	19%

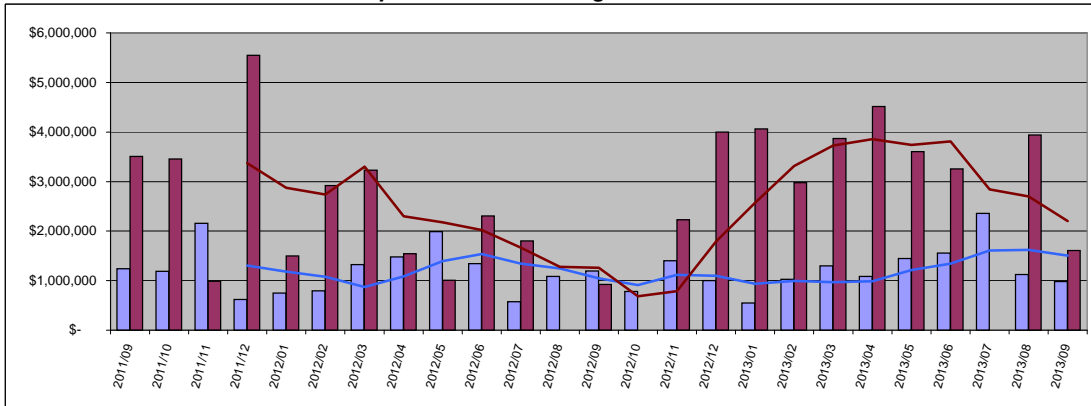
	Units	Inventory
Current Active	83	10.4
Pending	10	1.3

Residential	Units	Year Delta
Units Sold	1	-75%
Moving Trend	2	0%

	Units	Inventory *
Current Active	29	12.9
Pending	4	1.8

* Inventory is in months and is based on moving trend

September 2013 Average Sold Price



Condo	Average	Year Delta
Sold Price	\$ 983,600	-18%
Moving Trend	\$ 1,505,142	43%

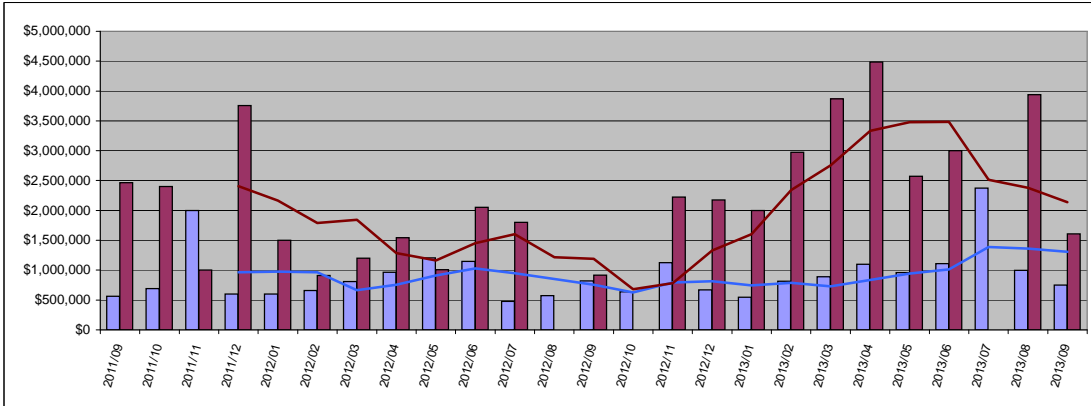
	Average	Ratio
Current Active	\$1,860,227	124%
Pending	\$1,626,100	108%

Residential	Average	Year Delta
Sold Price	\$ 1,610,000	74%
Moving Trend	\$ 2,202,083	75%

	Average	Ratio **
Current Active	\$3,819,828	173%
Pending	\$3,098,750	141%

** Ratio is average list price divided by moving trend of average sales price

September 2013 Median Sold Price



Condo	Median	Year Delta
Sold Price	\$ 750,000	-9%
Moving Trend	\$ 1,308,438	73%

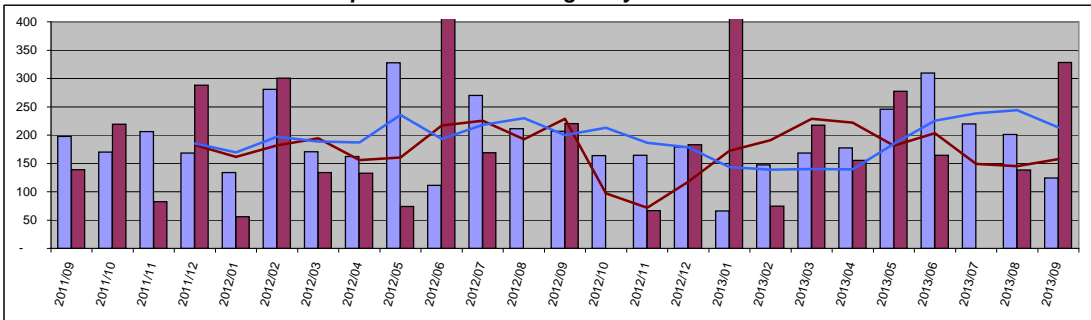
	Median	Ratio
Current Active	\$1,365,000	104%
Pending	\$1,358,500	104%

Residential	Median	Year Delta
Sold Price	\$ 1,610,000	76%
Moving Trend	\$ 2,137,500	79%

	Median	Ratio **
Current Active	\$2,000,000	94%
Pending	\$1,937,500	91%

** Ratio is median list price divided by moving trend of a median sales price

September 2013 Average Days On Market

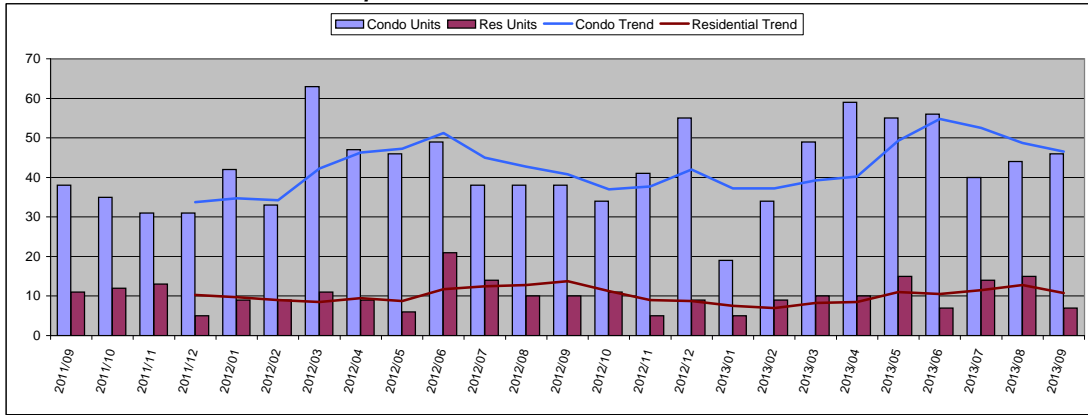


Condo	Value	Year Delta
Days On Mkt	124	-40%
Moving Trend	214	7%
Current Active	193	
Pending	242	

Residential	Value	Year Delta
Days On Mkt	328	49%
Moving Trend	158	-31%
Current Active	148	
Pending	129	

West Maui

September 2013 Number of Units Sold



September 2013

Condo	Units	Year Delta
Units Sold	46	21%
Moving Trend	47	14%

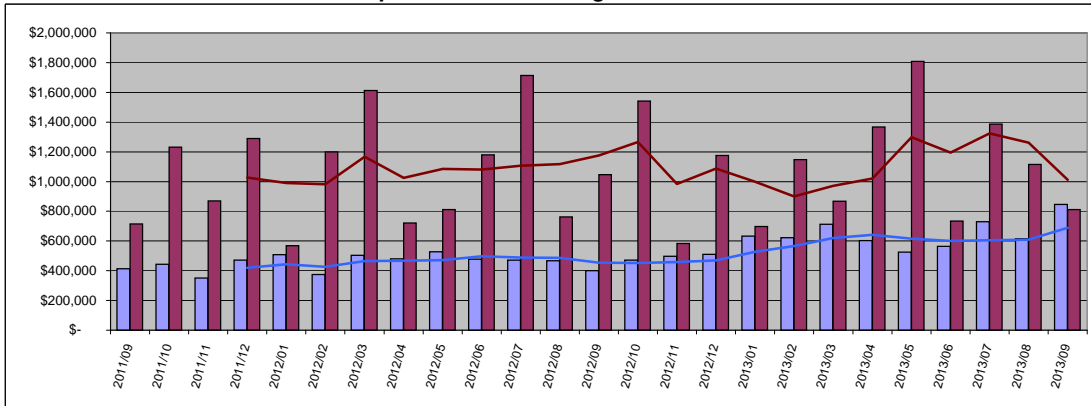
	Units	Inventory
Current Active	283	6.1
Pending	71	1.5

Residential	Units	Year Delta
Units Sold	7	-30%
Moving Trend	11	-22%

	Units	Inventory *
Current Active	104	9.7
Pending	40	3.7

* Inventory is in months and is based on moving trend

September 2013 Average Sold Price



Condo	Average	Year Delta
Sold Price	\$ 846,559	111%
Moving Trend	\$ 688,816	52%

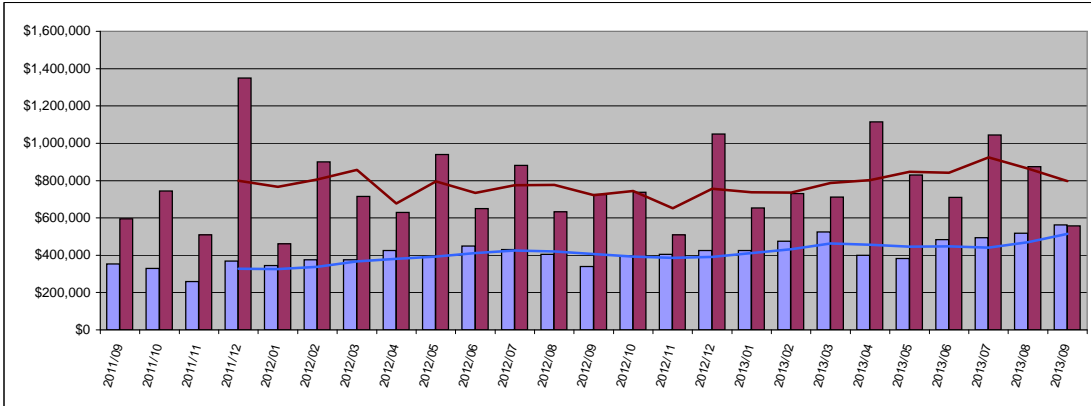
	Average	Ratio
Current Active	\$847,929	123%
Pending	\$575,915	84%

Residential	Average	Year Delta
Sold Price	\$ 810,929	-22%
Moving Trend	\$ 1,011,357	-14%

	Average	Ratio **
Current Active	\$3,543,013	350%
Pending	\$1,057,680	105%

** Ratio is average list price divided by moving trend of average sales price

September 2013 Median Sold Price



Condo	Median	Year Delta
Sold Price	\$ 562,500	66%
Moving Trend	\$ 514,875	27%

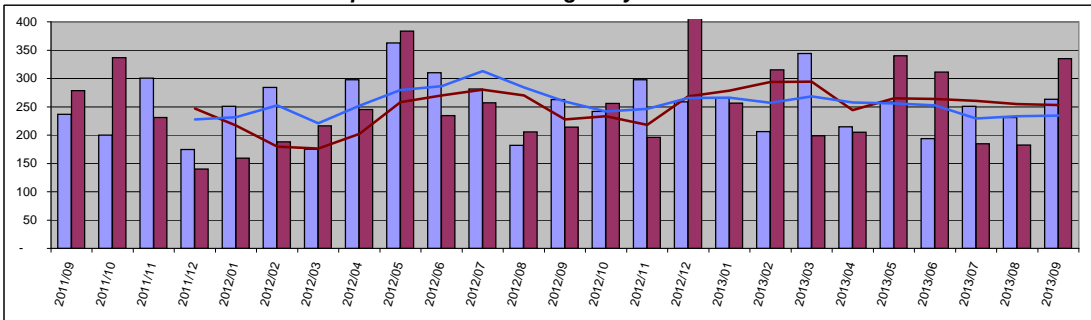
	Median	Ratio
Current Active	\$685,000	133%
Pending	\$399,000	77%

Residential	Median	Year Delta
Sold Price	\$ 557,500	-23%
Moving Trend	\$ 796,875	10%

	Median	Ratio **
Current Active	\$2,435,000	306%
Pending	\$809,750	102%

** Ratio is median list price divided by moving trend of a median sales price

September 2013 Average Days On Market



Condo	Value	Year Delta
Days On Mkt	263	0%
Moving Trend	235	-9%

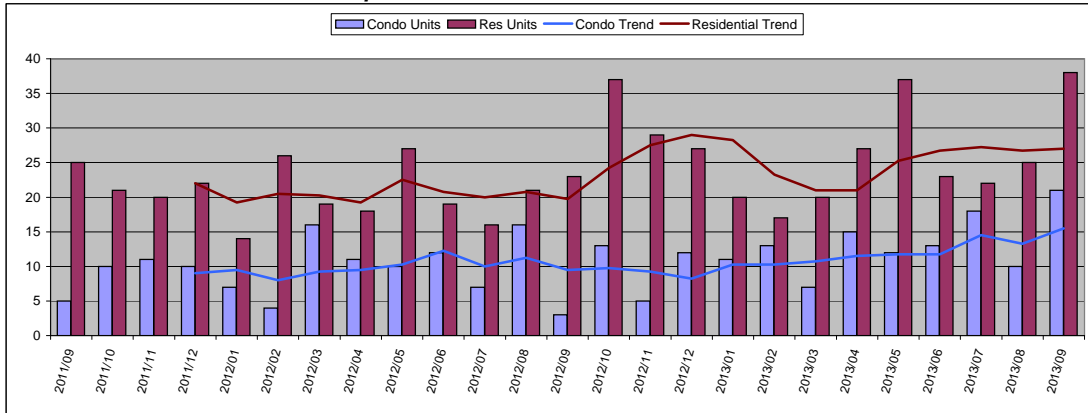
	Value	Year Delta
Current Active	252	
Pending	226	

Residential	Value	Year Delta
Days On Mkt	335	57%
Moving Trend	253	11%

	Value	Year Delta
Current Active	222	
Pending	290	

Central Maui

September 2013 Number of Units Sold



September 2013

Condo	Units	Year Delta
Units Sold	21	600%
Moving Trend	16	63%

	Units	Inventory
Current Active	21	1.4
Pending	69	4.5

Residential	Units	Year Delta
Units Sold	38	65%
Moving Trend	27	37%

	Units	Inventory *
Current Active	68	2.5
Pending	78	2.9

* Inventory is in months and is based on moving trend

September 2013 Average Sold Price



Condo	Average	Year Delta
Sold Price	\$ 247,905	229%
Moving Trend	\$ 215,340	2%

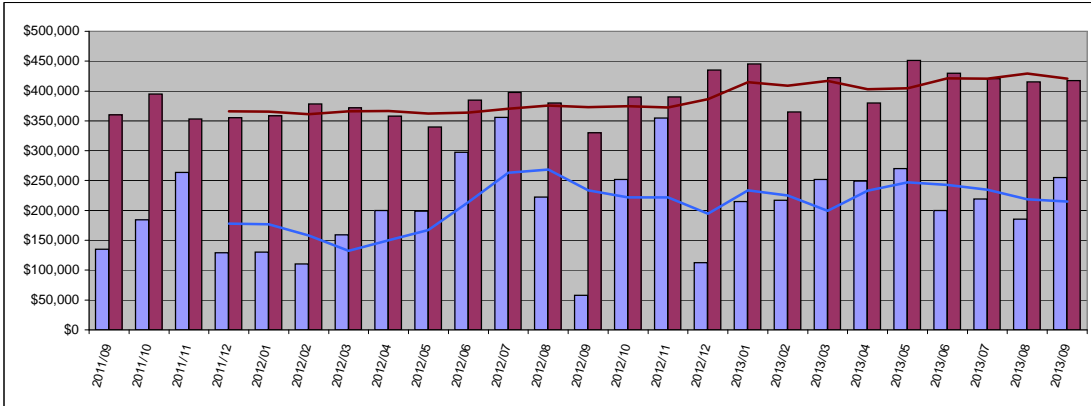
	Average	Ratio
Current Active	\$228,081	106%
Pending	\$314,429	146%

Residential	Average	Year Delta
Sold Price	\$ 485,951	32%
Moving Trend	\$ 468,330	13%

	Average	Ratio **
Current Active	\$675,689	144%
Pending	\$442,712	95%

** Ratio is average list price divided by moving trend of average sales price

September 2013 Median Sold Price



Condo	Median	Year Delta
Sold Price	\$ 255,000	340%
Moving Trend	\$ 214,895	-8%

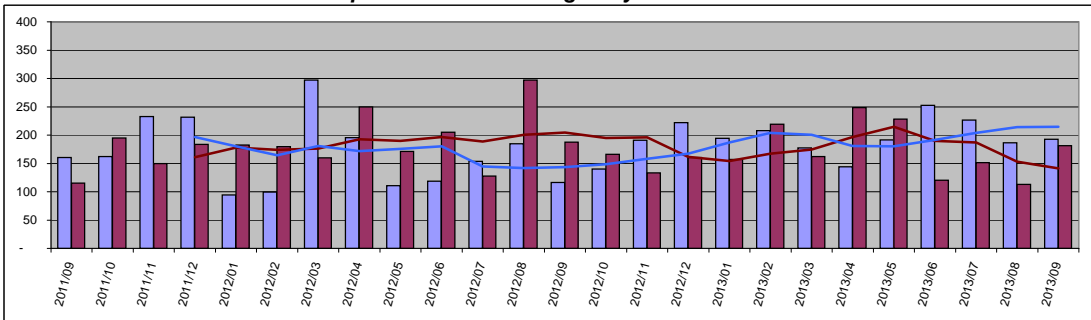
	Median	Ratio
Current Active	\$169,900	79%
Pending	\$284,000	132%

Residential	Median	Year Delta
Sold Price	\$ 417,454	26%
Moving Trend	\$ 420,859	13%

	Median	Ratio **
Current Active	\$577,450	137%
Pending	\$400,445	95%

** Ratio is median list price divided by moving trend of a median sales price

September 2013 Average Days On Market

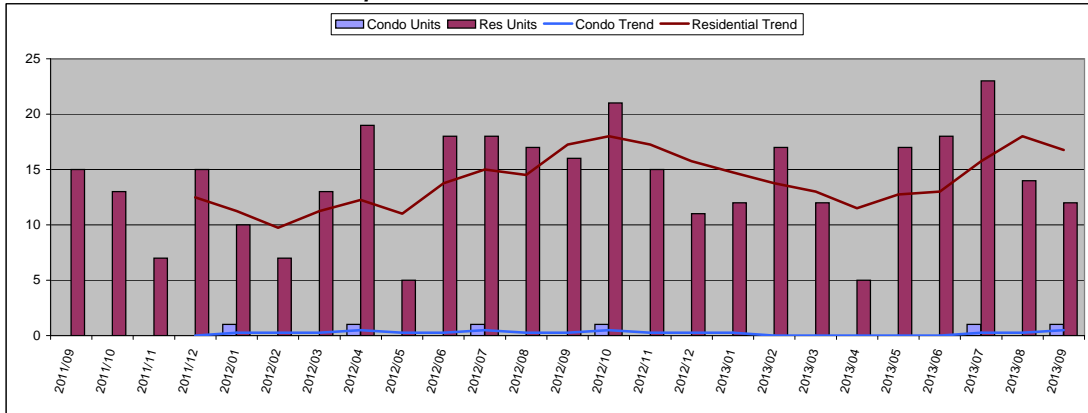


Condo	Value	Year Delta
Days On Mkt	193	66%
Moving Trend	215	50%
Current Active	175	
Pending	131	

Residential	Value	Year Delta
Days On Mkt	181	-3%
Moving Trend	141	-31%
Current Active	126	
Pending	146	

Upcountry

September 2013 Number of Units Sold



September 2013

Condo	Units	Year Delta
Units Sold	1	-
Moving Trend	1	100%

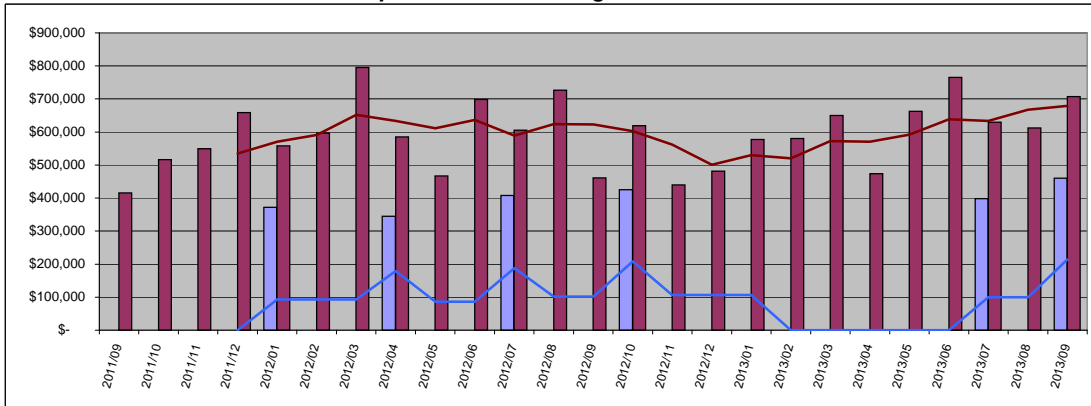
	Units	Inventory
Current Active	0	
Pending	0	

Residential	Units	Year Delta
Units Sold	12	-25%
Moving Trend	17	-3%

	Units	Inventory *
Current Active	87	5.2
Pending	31	1.9

* Inventory is in months and is based on moving trend

September 2013 Average Sold Price



Condo	Average	Year Delta
Sold Price	\$ 460,000	-
Moving Trend	\$ 214,500	110%

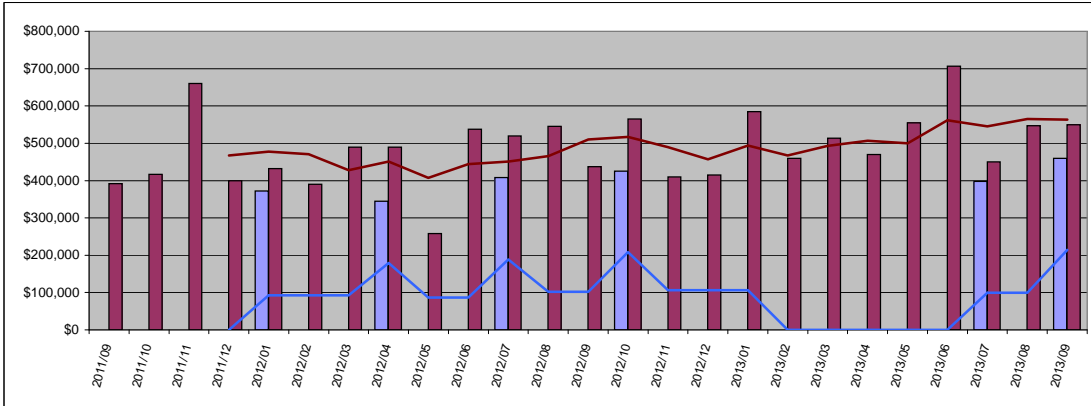
	Average	Ratio
Current Active	\$0	
Pending	\$0	

Residential	Average	Year Delta
Sold Price	\$ 707,667	53%
Moving Trend	\$ 678,825	9%

	Average	Ratio **
Current Active	\$1,532,204	226%
Pending	\$634,552	93%

** Ratio is average list price divided by moving trend of average sales price

September 2013 Median Sold Price



Condo	Median	Year Delta
Sold Price	\$ 460,000	-
Moving Trend	\$ 214,500	110%

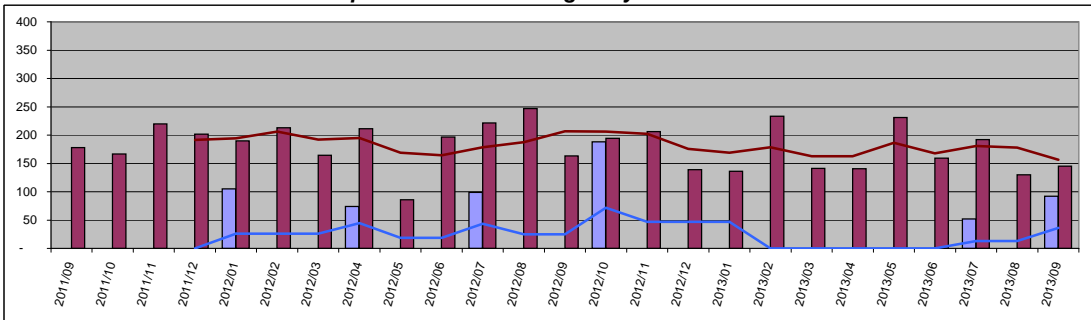
	Median	Ratio
Current Active	\$0	
Pending	\$0	

Residential	Median	Year Delta
Sold Price	\$ 550,000	26%
Moving Trend	\$ 563,438	10%

	Median	Ratio **
Current Active	\$1,149,000	204%
Pending	\$485,000	86%

** Ratio is median list price divided by moving trend of a median sales price

September 2013 Average Days On Market

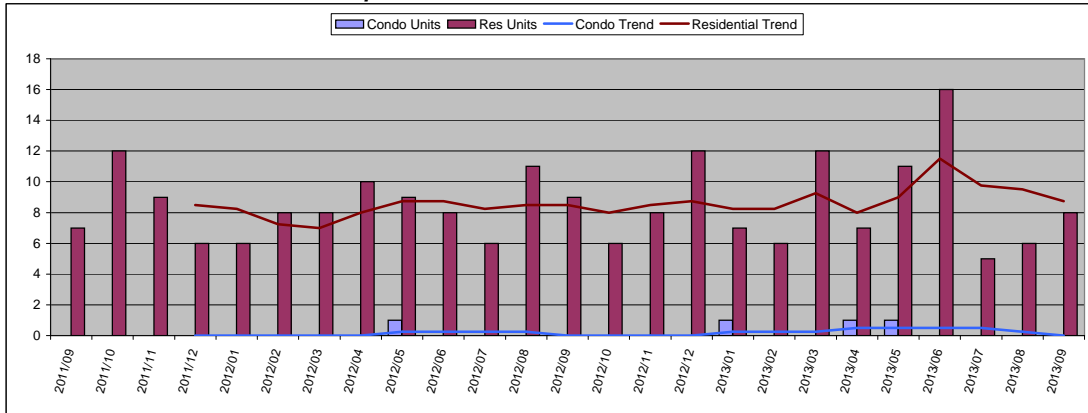


Condo	Value	Year Delta
Days On Mkt	92	-
Moving Trend	36	45%
Current Active	0	
Pending	0	

Residential	Value	Year Delta
Days On Mkt	145	-11%
Moving Trend	157	-24%
Current Active	152	
Pending	196	

North Shore Maui

September 2013 Number of Units Sold



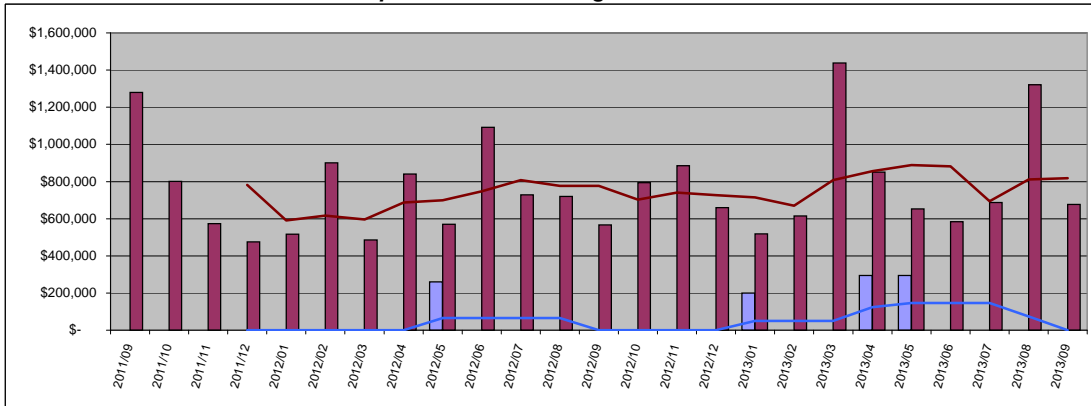
September 2013

Condo	Units	Year Delta
Units Sold	0	-
Moving Trend	0	-
Units		Inventory
Current Active	2	
Pending	1	

Residential	Units	Year Delta
Units Sold	8	-11%
Moving Trend	9	3%
Units		Inventory *
Current Active	53	6.1
Pending	21	2.4

* Inventory is in months and is based on moving trend

September 2013 Average Sold Price

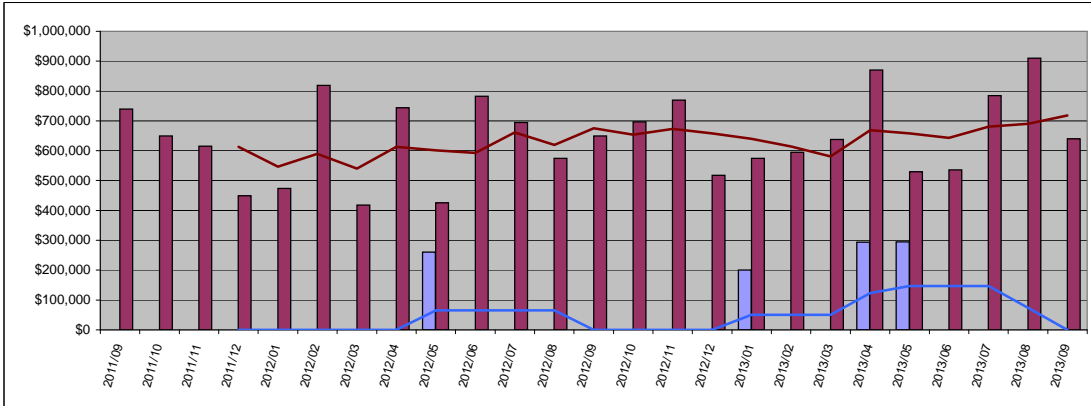


Condo	Average	Year Delta
Sold Price \$	-	-
Moving Trend \$	-	-
Average		Ratio
Current Active	\$299,950	
Pending	\$199,000	

Residential	Average	Year Delta
Sold Price \$	676,125	19%
Moving Trend \$	817,418	5%
Average		Ratio **
Current Active	\$2,068,178	253%
Pending	\$773,952	95%

** Ratio is average list price divided by moving trend of average sales price

September 2013 Median Sold Price

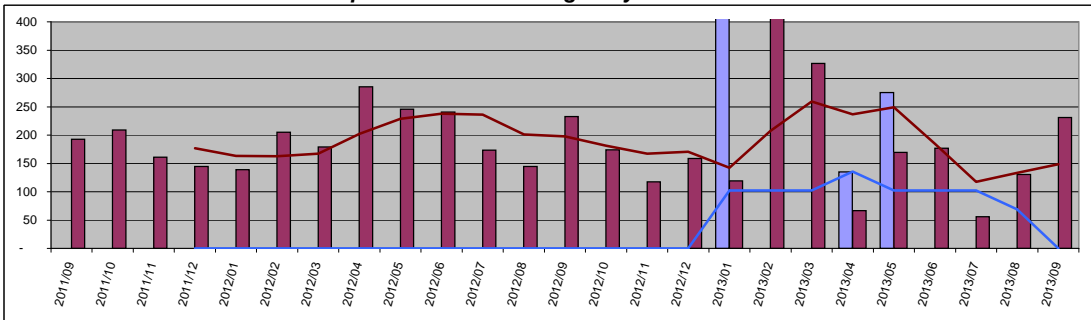


Condo	Median	Year Delta
Sold Price \$	-	-
Moving Trend \$	-	-
Median		Ratio
Current Active	\$299,950	
Pending	\$199,000	

Residential	Median	Year Delta
Sold Price \$	639,500	-2%
Moving Trend \$	717,688	6%
Median		Ratio **
Current Active	\$1,150,000	160%
Pending	\$598,000	83%

** Ratio is median list price divided by moving trend of a median sales price

September 2013 Average Days On Market

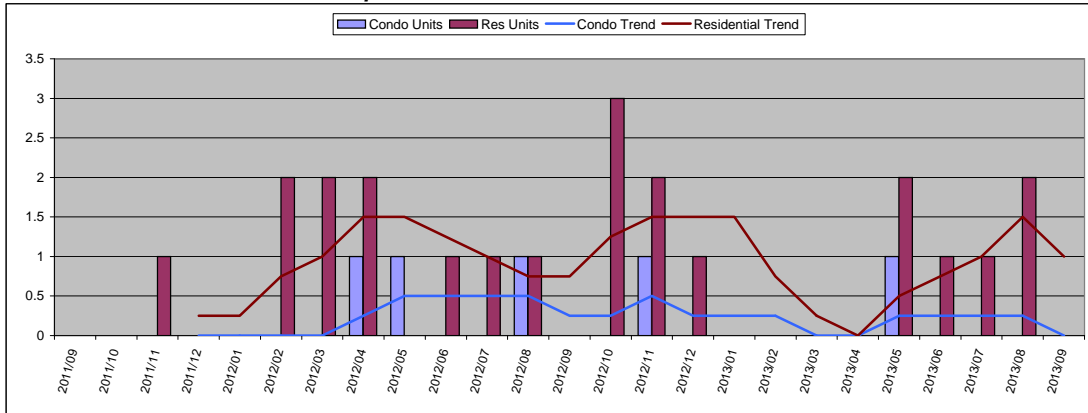


Condo	Value	Year Delta
Days On Mkt	0	-
Moving Trend	0	-
Current Active	114	
Pending	616	

Residential	Value	Year Delta
Days On Mkt	231	-1%
Moving Trend	149	-25%
Current Active	196	
Pending	168	

East Maui

September 2013 Number of Units Sold



September 2013

Condo	Units	Year Delta
Units Sold	0	-
Moving Trend	0	-

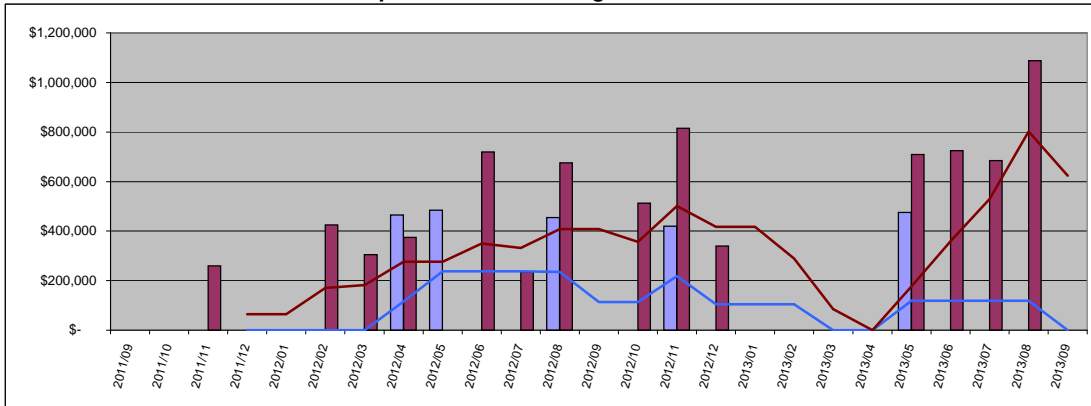
	Units	Inventory
Current Active	1	
Pending	0	

Residential	Units	Year Delta
Units Sold	0	-
Moving Trend	1	33%

	Units	Inventory *
Current Active	16	16.0
Pending	4	4.0

* Inventory is in months and is based on moving trend

September 2013 Average Sold Price



Condo	Average	Year Delta
Sold Price	\$ -	-
Moving Trend	\$ -	-

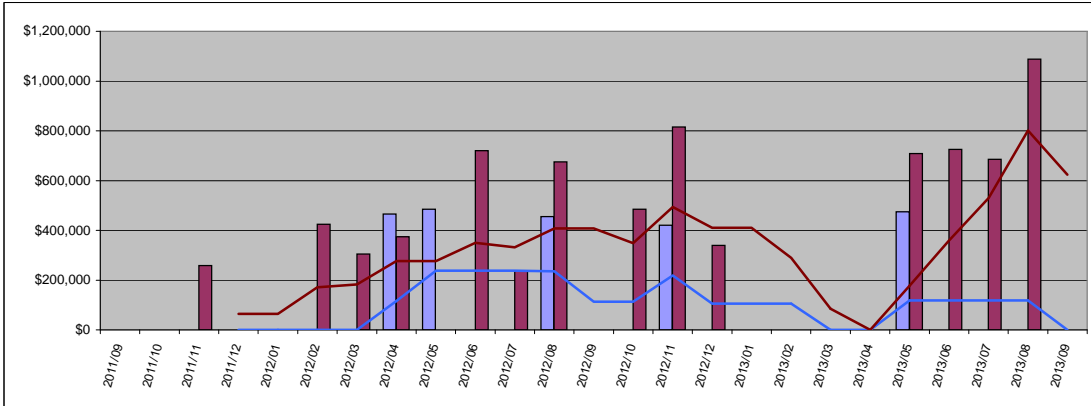
	Average	Ratio
Current Active	\$475,000	
Pending	\$0	

Residential	Average	Year Delta
Sold Price	\$ -	-
Moving Trend	\$ 624,375	53%

	Average	Ratio **
Current Active	\$1,702,625	273%
Pending	\$548,500	88%

** Ratio is average list price divided by moving trend of average sales price

September 2013 Median Sold Price



Condo	Median	Year Delta
Sold Price	\$ -	-
Moving Trend	\$ -	-

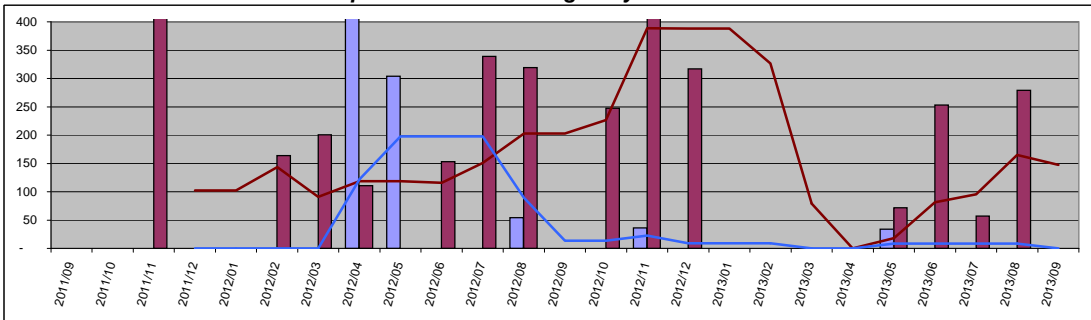
	Median	Ratio
Current Active	\$475,000	
Pending	\$0	

Residential	Median	Year Delta
Sold Price	\$ -	-
Moving Trend	\$ 624,375	53%

	Median	Ratio **
Current Active	\$1,070,000	171%
Pending	\$537,500	86%

** Ratio is median list price divided by moving trend of a median sales price

September 2013 Average Days On Market



Condo	Value	Year Delta
Days On Mkt	0	-
Moving Trend	0	-
Current Active	165	
Pending	0	

Residential	Value	Year Delta
Days On Mkt	0	-
Moving Trend	147	-27%
Current Active	230	
Pending	119	