

2850 Kamaile Place, Wailuku, HI

From the minute you drive into the Porte Cochere and step through the front door, you feel at home. Seamless indoor / outdoor living with luxury finishes including polished travertine tile and custom woodwork throughout. Whether you want to entertain, relax or escape, this home will delight your senses with island-wide views in a country setting. And it's just 10 minutes from downtown Wailuku.



Entertain

Escape



2.3 Acres
2 Dwellings
5,529 Sq Ft
Main Home
w/3 car
garage
1,008 Sq Ft
Cottage w/2-
car garage

Relax



2850 Kamaile Place
Wailuku, HI 96753
MLS: 355286

Main Residence

The division of indoor/outdoor living is seamless as you step through the Great Hall's sliding panel doors to the saltwater pool and hot tub, outdoor kitchen and wood-burning fireplace. Enjoy chatting with friends seated at the outside bar while preparing pupus in the indoor kitchen. The main living areas, including the 2 master suites, are easily accessible on the first level with wide hallways and roll-in showers. Upstairs, over the 3-car garage is a huge recreation room with a wet-bar, bathroom, lanai and media room with a state-of-the-art surround sound projection system.

Inviting



Peaceful



There is ample storage with walk-in closets and built-in cabinetry. Additional rooms include the library, office, formal dining room, den with wet bar and fireplace, expansive laundry and storage room.



Elegant



2850 Kamaile Place
Wailuku, HI 96753
MLS: 355286

The Land

The fully landscaped and manicured 2.3 acres is at the top of Wailuku Country Estates. Grading, terracing and irrigation is complete for easy maintenance. Although rural, the Wailuku Country Estates HOA with 184 homes and home sites, maintains the highest quality standards.

Pristine

A variety of fruit trees, citrus and bananas are producing quickly in the fertile soil. Raised beds are in place. Live off the land.



Grow



Wailuku Country Estates is designated as agricultural land and each lot has a water meter for agricultural use for just \$95/month. A separate county water meter is for personal use. Maximum limits apply.

Private

To left, the blue dot shows home location and proximity to the heart of Maui's business areas. Just 10 minutes, and a world away!



2850 Kamaile Place
Wailuku, HI 96753
MLS: 355286

O'hana / Cottage

Your guests can enjoy amazing Ocean views from the lanai of the private 2 bedroom, 2 bath cottage. Built in 2007, this is not your usual cottage. High-end finishes, a full 2 car garage and over 1000 square feet make this a great "home away from home" for your guests. Or with a separate yard complete with fire pit and separate electric meter, you could rent it out for extra income.

Oceanviews



Cottage:	Sq. Ft.
Interior:	1,008
Covered Lanai:	368
<u>2 Car Garage w/storage</u>	<u>684</u>
Total	2,060

Luxury



2850 Kamaile Place
Wailuku, HI 96753
MLS: 355286

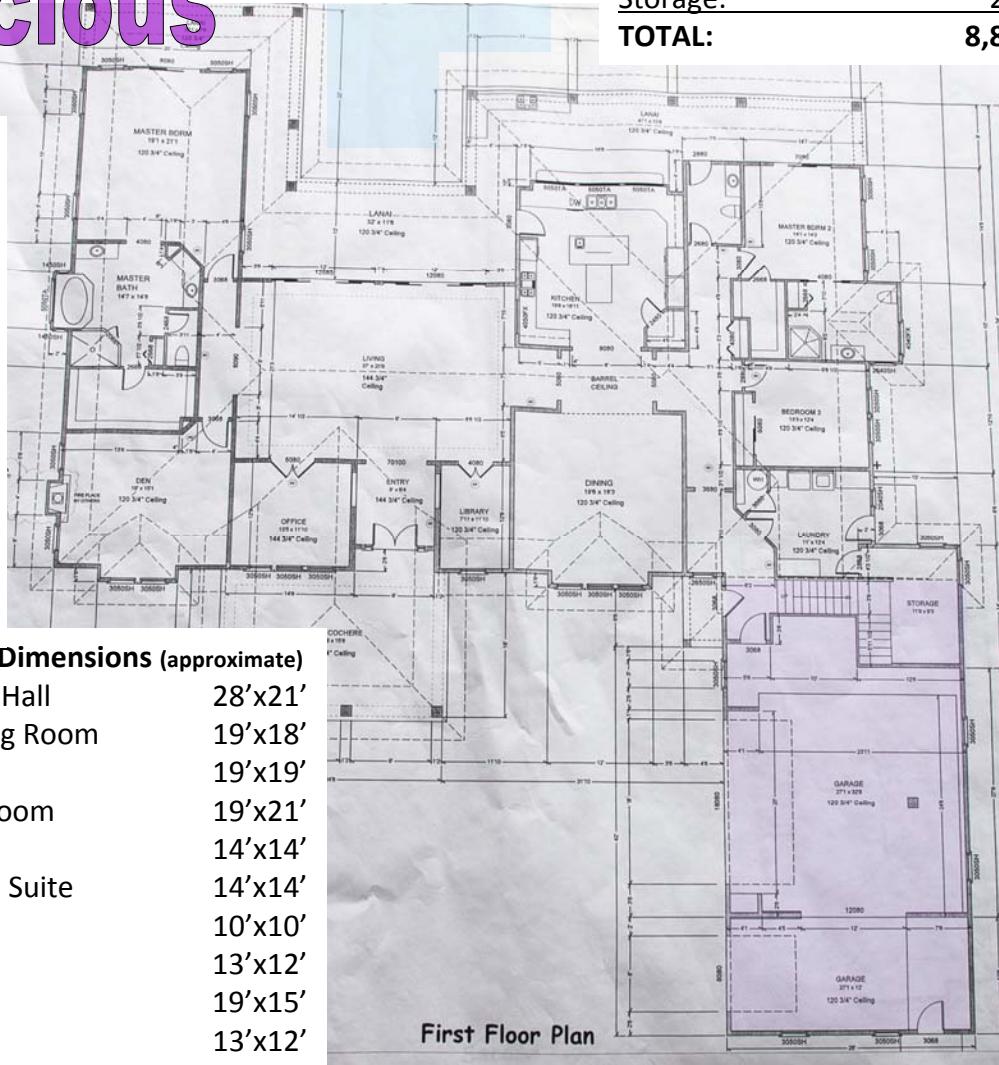
Floor Plan

The main residence has over 5,500 sq. feet of living space with primary rooms all on one floor. Integrated indoor/outdoor space features sliding doors and windows in the Living Room and Kitchen. The Game/Media rooms are above the garage. Bedrooms each have walk-in closets finished in African Mahogany.

Main House:	Sq. Ft.
Lower Floor Interior:	4,440
Upper Floor Interior:	1,290
Lower Covered Lanai:	1,186
Upper Covered Lanai:	102
Porte Cochere:	407
3 Car Garage:	1,189
<u>Storage:</u>	<u>200</u>
TOTAL:	8,814

Spacious

Disclaimer: All measurements are taken from design plans and may not be accurate. Plans are "as designed" and were adapted during construction.



Main Room Dimensions (approximate)

Living/Great Hall	28'x21'
Formal Dining Room	19'x18'
Kitchen	19'x19'
Master Bedroom	19'x21'
bath	14'x14'
2 nd Bedroom Suite	14'x14'
bath	10'x10'
3 rd Bedroom	13'x12'
Den	19'x15'
Office	13'x12'
Library	8'x12'
Upstairs: Game Room	24'x29'
Upstairs: Media Room	24'x17'

Accessible

2850 Kamaile Place
 Wailuku, HI 96753
 MLS: 355286

Detailed Features

Indoor / Outdoor Living

- Slider doors w/screens between living room and pool area
- Outdoor kitchen w/grill, sink and refrigerator and easy pass-through to indoor kitchen
- Outdoor wood-burning fireplace
- Propane-heated saline pool and Jacuzzi
- Pool area accessible from ensuite bedrooms, living room, kitchen and guest bath



Luxury Finishes

- Italian imported polished travertine tile flooring
- Custom African Mahogany woodwork and cabinetry
- Custom Granite Counters
- 10' + ceilings and wide hallways



Eat-in Kitchen

- Island with separate bar sink and icemaker
- Kenmore Professional stainless appliances
- Dual drawer dishwasher
- Walk-in Pantry
- Double oven
- Propane stovetop w/overhead vent system
- Roll out drawers in most lower cabinets

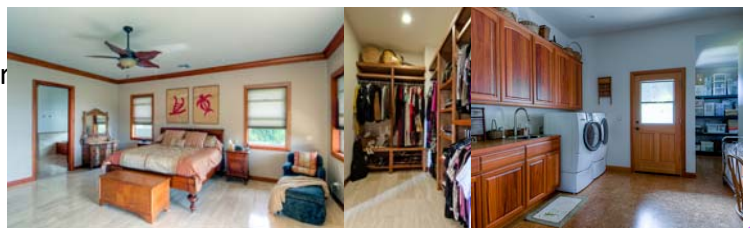


Efficient and Convenient

- Porte Cochere for easy drive up access
- State of the art Media Room w/stereo surround sound
- 11-zone A/C system
- Integrated Vacuum System
- On-demand Hot Water System
- Wet bars /mini-refrigerators in Den and Game Room
- Propane, easy to light fireplace in Den
- 8 zone security system

Bedroom Luxury

- 2 ensuite bathrooms w/roll-in shower
- Walk-in Closets w/custom cabinetry
- Dual sinks and Jacuzzi Spa tub in Master suite



2850 Kamaile Place
Wailuku, HI 96753
MLS: 355286